

# Harnessing Student Feedback in the NGDLE

Melissa Loble, VP Professional Services  
& Platform  
@melissajoell  
mloble@instructure.com

# Our Journey Together

- Introductions
- Overview of an NGDLE
- Group brainstorm
- Where does feedback live?
- Future NGDLE
- Q&A

"Our evolutionary lineage is marked by mastery of change.



**In our time, the pace is quickening.”**

*Carl Sagan*

# What is the NGDLE?

“What comes next must be informed by the new **learning-centered model** that increasingly characterizes higher education practice (hence *next generation*). It must of course be **digital**, given that digital technology has become a component of virtually all teaching and learning practice. It must be **about learning**, since learning ties together learner and instructor. Finally, it must be an environment or ecosystem—**a dynamic, interconnected, ever-evolving community of learners, instructors, tools, and content.** “

Educause, ELI Paper, April 2015

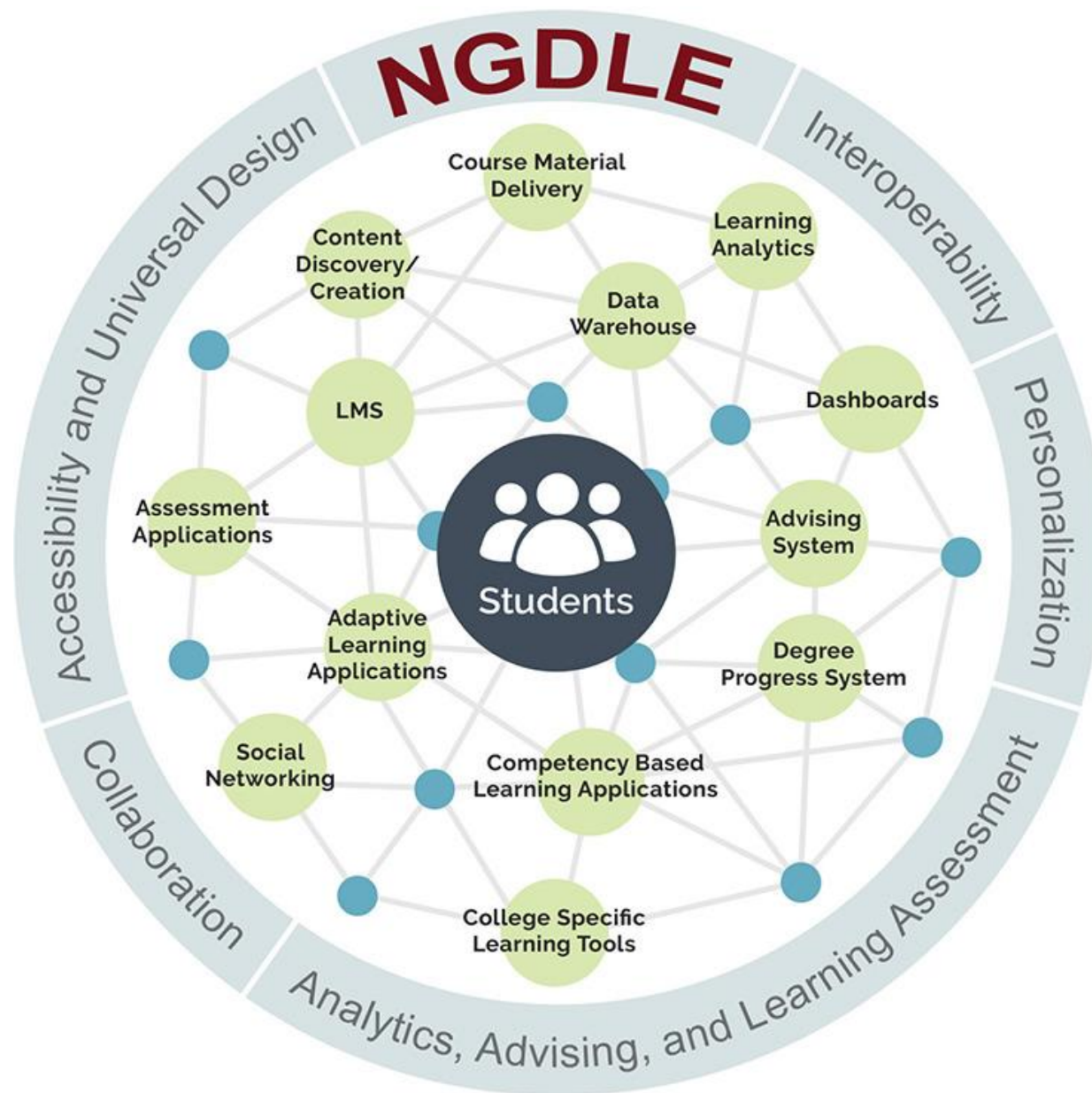
# NDGLE Architecture



collection of IT systems  
full adherence to standards  
supports personalization  
cloud-based  
mash-up approach

# NGDLE Five Domains of Core Functionality

1. Interoperability and integration
2. Personalization
3. Analytics, advising, and learning assessment
4. Collaboration
5. Accessibility and universal design



<http://er.educause.edu/articles/2017/7/the-ngdle-we-are-the-architects>

# Applying the Lego Model...



“...would result in a toolbox of applications, content, and platforms that could be assembled in custom ways. “

Educause, ELI Paper, April  
2015



**“It is becoming progressively easier for many users to get precisely what they want by designing it for themselves.”**

**– Eric von Hippel, *Democratizing Innovation***



“Lego” by Risqi Ario. CC By-NC on Flickr

# Today's NGDLE

Progress has been made:

- advancement of standards
- broader collection of tools
- growing openness
- shift in focus on the student



However, two years later, we are still far from what the report recommended.

# So, where does feedback live?

In small groups or pairs:

1. Discuss the role of student feedback in the NGDLE
2. Brainstorm the various tools (in addition to Blue) that could be used in a NGDLE to gather student feedback.

Share your ideas for #2 in the Bluepulse app for the conference session.

# So, where does feedback live?

Feedback exists at the heart of the student action.

course evals, formative feedback, learning experience management (eXplorance)

video collaboration (arc, kaltura, flipgrid)

discussion tools (Canvas, D2L, Blackboard, 42lines)

portfolios, journals, blogs, and other publishing tools (pebblepad, pathbrite, onenote, hoot.me)

# And where should we go?

Student continues to be at the center

Interoperability deepens

Hub and spoke is replaced with a networked approach

Educational institutions drive use cases

And?

# Discussion, Q&A, & Feedback

Melissa Loble  
mloble@instructure.com