

# Question Bank 2.0: How we made it easier for our users to submit questions..

Brett K. McDaniel, M.Ed  
Manager, Academic Technical Support Services  
University of Kentucky  
[brett.mcdaniel@uky.edu](mailto:brett.mcdaniel@uky.edu)

and Special Guest



# About the University of Kentucky

- 1865 - started as a land grant institution
- Student Population: 31,000
  - Full-time 28,000
  - Part-time 3,000
  - Undergrad 23,000
  - Graduate 8,000
- Full-time faculty: 2,400
- Course Sections per semester: about 8500
- Made up 17 colleges and a Graduate School

# Teacher Course Evaluation(TCE) at the University of Kentucky

- Centralized Common Question set for over 30 years
- 35 core questions
- Until summer 2015, the majority was done on paper
- Fall of 2015, 14 of the 17 colleges and the Graduate School moved to online using Blue for most of their TCEs
- Fall 2015 - 111,000 invites were sent out to students

# Why we use Question Bank (Qbank)?

## Additional Question needs:

1. Up to 20 additional questions as prescribed by Faculty Senate
2. Need to be able to reuse questions from semester to semester
3. Need to have reporting on additional questions

## What does our Qbank implementation look like?

- We have 1755 questions currently in our Qbank
- Questions are either comment or single selection
- Questions are broken down by Course or Instructor and at the 4 levels: College, Department, Course, and Section.

# The old way we implemented the QBank

Implementation is in three not so easy steps:

1. Build the Question Bank (excel file)
2. Create the placeholders in Questionnaire
3. Create the question mapping file (excel file)

# Building the Qbank file or

## “Getting the college contacts to get us the questions”

1. I created detailed instructions for the College Contacts to use when editing our modified Qbank file
2. I created a modified Qbank file with added columns for more info and sent them it with some sample lines already in it. I also removed the Option and Score columns (because we control the choices in our Likert scale).
3. Set a hard deadline (actually Faculty Senate approved this). We require the questions by the first day of the semester.

# Creating the Qbank file

1. Take the excel file received from the College contacts and verify that everything looks correct.
2. Copy the file to a new file name for that college.
3. Remove the extra columns not needed by the Blue system.
4. Combine all of the files into a new file.
5. Save the file with the semester and date in the name.
6. Upload the file to the Blue system as the new Question Bank.



## **Create the placeholders in the Questionnaire.**

1. Go through the files sent to you from the college contacts and figure out how many of each type of questions you have.
2. Then create the placeholders in the Questionnaire for each type. (It is important to do them all in order. This will make the mapping easier.)
3. We have 16 possible question type placeholders.

# Partial Questionnaire example

Index	Title	Type	Edit	Preview
<input type="checkbox"/> 1	A: Preselected Questions - These questions are displayed for informational purposes only.	DP Section Level 1	<a href="#">Edit</a>	<a href="#">Preview</a>
<input type="checkbox"/> 2	Student Information	Section Title	<a href="#">Edit</a>	<a href="#">Preview</a>
<input type="checkbox"/> 3	My classification is	Single Selection	<a href="#">Edit</a>	<a href="#">Preview</a>
<input type="checkbox"/> 4	My main reason(s) for taking this course is that it: (Select all that apply)	Multiple Selection	<a href="#">Edit</a>	<a href="#">Preview</a>
<input type="checkbox"/> 5	My expected grade in this course	Single Selection	<a href="#">Edit</a>	<a href="#">Preview</a>
<input type="checkbox"/> 6	Hours per week spent on the course (excluding class time)	Single Selection	<a href="#">Edit</a>	<a href="#">Preview</a>
<input type="checkbox"/> 7	Page Break	Section Title	<a href="#">Edit</a>	<a href="#">Preview</a>
<input type="checkbox"/> 8	NOTICE: All responses to the rest of the questions go from negative to positive, from left to right. Please choose carefully.	Section Title	<a href="#">Edit</a>	<a href="#">Preview</a>
<input type="checkbox"/> 9	Course Related Questions	Section Title	<a href="#">Edit</a>	<a href="#">Preview</a>
<input type="checkbox"/> 10	The course was well organized	Single Selection	<a href="#">Edit</a>	<a href="#">Preview</a>
<input type="checkbox"/> 11	Class meetings contributed to my learning of the course content.	Single Selection	<a href="#">Edit</a>	<a href="#">Preview</a>
<input type="checkbox"/> 12	Grading in the course was fair.	Single Selection	<a href="#">Edit</a>	<a href="#">Preview</a>
<input type="checkbox"/> 13	Assessments (e.g., tests, quizzes, papers, homework, projects) reflected course material.	Single Selection	<a href="#">Edit</a>	<a href="#">Preview</a>
<input type="checkbox"/> 14	I understand how the final grade will be calculated in the course.	Single Selection	<a href="#">Edit</a>	<a href="#">Preview</a>
<input type="checkbox"/> 15	I consider [\$\$NAME] to be a quality course.	Single Selection	<a href="#">Edit</a>	<a href="#">Preview</a>
<input type="checkbox"/> 16	Which aspects of the course were most helpful? Why?	Comments	<a href="#">Edit</a>	<a href="#">Preview</a>
<input type="checkbox"/> 17	Which aspects of the course would you change? How and Why?	Comments	<a href="#">Edit</a>	<a href="#">Preview</a>
<input type="checkbox"/> 18	Page Break	Section Title	<a href="#">Edit</a>	<a href="#">Preview</a>
<input type="checkbox"/> 19	Dept_Crs_Com_001	Question Bank Comments	<a href="#">Edit</a>	<a href="#">Preview</a>
<input type="checkbox"/> 20	Dept_Crs_Com_002	Question Bank Comments	<a href="#">Edit</a>	<a href="#">Preview</a>
<input type="checkbox"/> 21	Dept_Crs_Com_003	Question Bank Comments	<a href="#">Edit</a>	<a href="#">Preview</a>
<input type="checkbox"/> 22	Dept_Crs_Com_004	Question Bank Comments	<a href="#">Edit</a>	<a href="#">Preview</a>
<input type="checkbox"/> 23	Dept_Crs_Com_005	Question Bank Comments	<a href="#">Edit</a>	<a href="#">Preview</a>
<input type="checkbox"/> 24	Page Break	Section Title	<a href="#">Edit</a>	<a href="#">Preview</a>
<input type="checkbox"/> 25	Dept_Crs_Sel_001	Question Bank Single Selection	<a href="#">Edit</a>	<a href="#">Preview</a>
<input type="checkbox"/> 26	Crs_Crs_Sel_001	Question Bank Single Selection	<a href="#">Edit</a>	<a href="#">Preview</a>
<input type="checkbox"/> 27	Crs_Crs_Sel_002	Question Bank Single Selection	<a href="#">Edit</a>	<a href="#">Preview</a>
<input type="checkbox"/> 28	Crs_Crs_Sel_003	Question Bank Single Selection	<a href="#">Edit</a>	<a href="#">Preview</a>

evaluate.uky.edu/Blue/Default.aspx

Projects > Summer 2016 II UK TCE > Questionnaire > Question List

Info Questionnaire Definition Subjects Members Triggers Access Tasks Language Publish

Question List Options Print Forms *Alternative Display Order* Virtual Question Question Bank Mapping Deleted Question List

Type: Question Bank Comments Select

Current Question Type: Question Bank Comments

**Question**  
 Dcpl\_Crs\_Com\_001

**Details**

**Help**

Identifier

Question for: Courses

Displayed On: Online Forms Only

Personalized Question (Selectable)  
 Mandatory Question  
 Hidden By Default  
 Keep Response If Hidden

Number of Lines: 4

Copy Question Settings Edit Fillout Labels Edit Preview Apply Changes Cancel

My Space  
 Home  
 Dashboard  
 Response Rate  
 My Preferences

Management  
 Projects  
 Reports  
 Monitoring  
 Question Bank

General  
 Record Mgmt  
 Sign Out

Help

evaluate.uky.edu/Blue/Default.aspx

UK blue

Brett McDaniel  
Wed, Aug 03, 2016

Projects > Summer 2016 II UK TCE > Questionnaire > Question List Save

Info Questionnaire Definition Subjects Members Triggers Access Tasks Language Publish

Question List Options Print Forms Alternative Display Order Virtual Question Question Bank Mapping Deleted Question List

Blue Admin

My Space  
 Home  
 Dashboard  
 Response Rate  
 My Preferences

Management  
 Projects  
 Reports  
 Monitoring  
 Question Bank

General  
 Record Mgmt  
 Sign Out

Type: Question Bank Single Selection Select

Current Question Type: Question Bank Single Selection

**Question**  
 Dept\_crs\_rel\_001 40.0

**Details**  
 40.0

**Help**  
 40.0

Identifier

Question for: Courses

Displayed On: Online Forms Only

Personalized Question (Selectable)  
 Mandatory Question  
 Hidden By Default  
 Keep Response If Hidden

Primary selection display Type:  Radio Button  Drop Down List  List Box

Horizontal or Vertical Display:  Horizontal  Horizontal (Compact)  Vertical

Number of Primary Selections: 6 \*

1st Scale Caption

Scores: Option Label

1	Strongly Disagree	40.0	*
2	Disagree	40.0	*
3	Neither Disagree nor Agree	40.0	*
4	Agree	40.0	*
5	Strongly Agree	40.0	*

# Create the question mapping file for your project

1. Export the mapping file from the current project after you have the questionnaire created.
2. Use the excel file sent from the college contacts to figure out which placeholder the questions should be mapped to.
3. When done, upload the mapping file.

**NOTE:** The more placeholders the wider (in number of columns) the question mapping file will be

**NEW!!!**

How we now implement the Qbank.

Users get a GUI!!

# I had a great idea!



Let's create a GUI interface and automate the question entering process.

One problem, not enough time.

Problem solved!

Meet Kelita Mayorga! My new assistant.

And she is great with technology!!

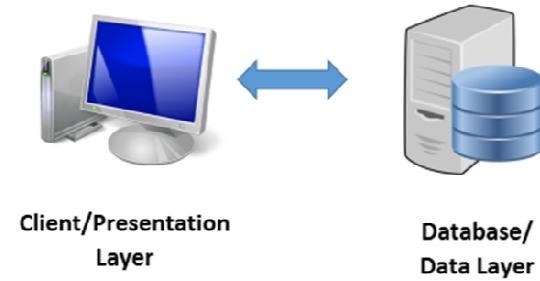


I shared my idea with Kelita.

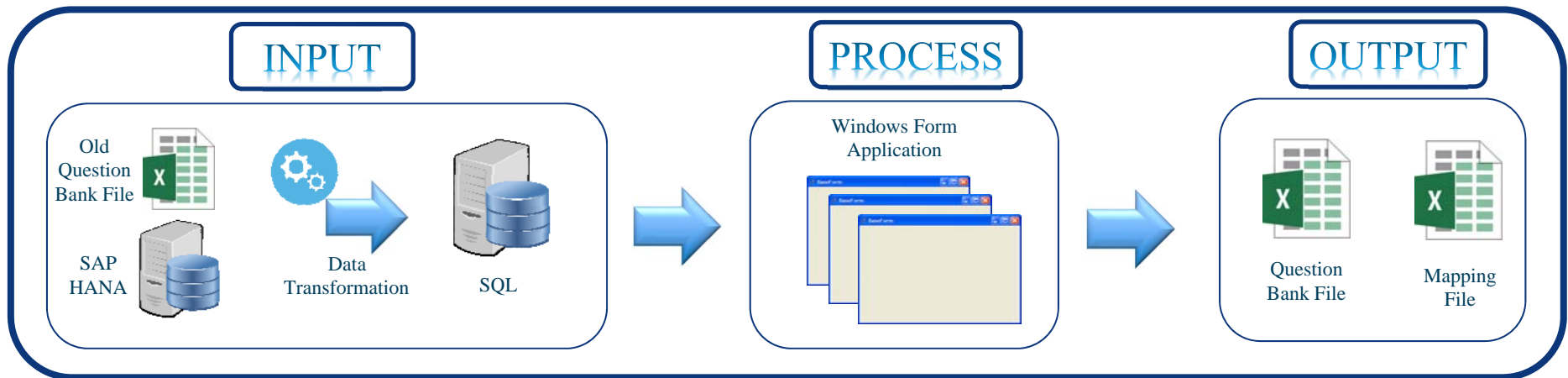
We brainstormed and she started on the project.

Let's see what she created!

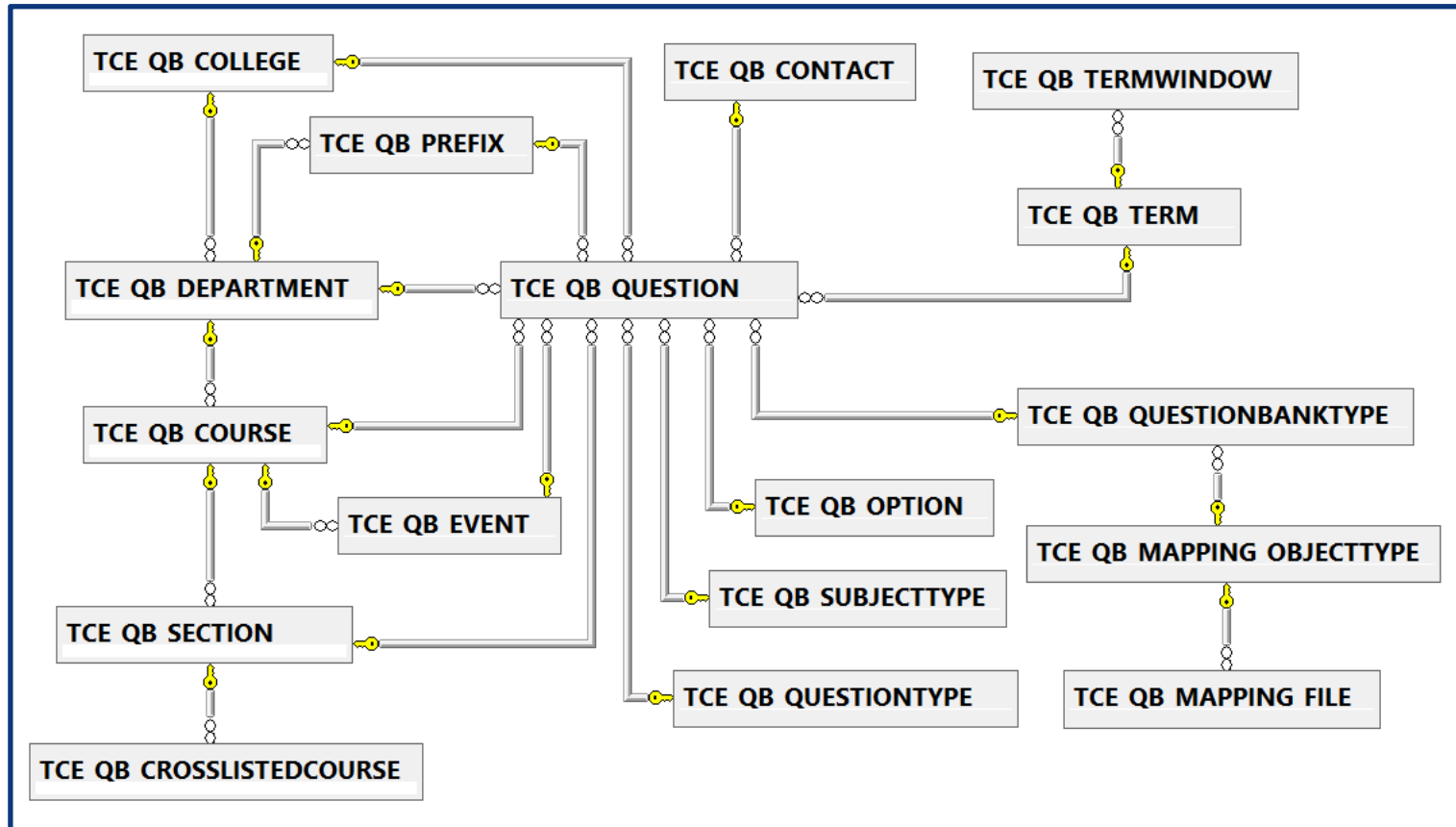
# We built a 2-Tier Architecture Software App:



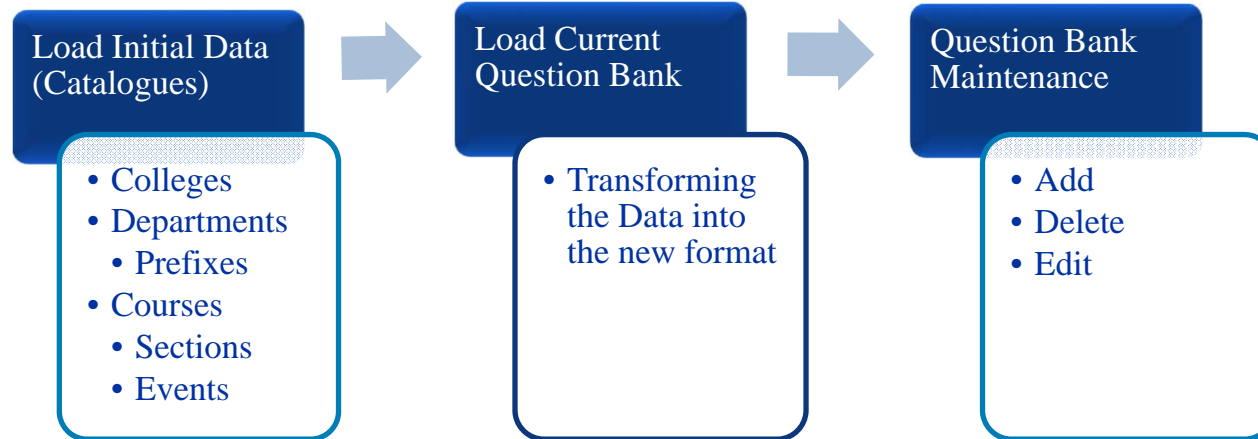
- TOOLS:
  - GUI Windows Form - VB .NET 2017
  - SQL Server



## Analysis and Design (Creation of the E - R Diagram as a result)



## The steps behind the implementation...



# Special Considerations

## Edit

- The Edit option allows to change the Text only.
- It keeps the same Question Number
- Internally the app is inserting a new question, since it is necessary to keep the original one for report proposes.
- We keep the old and the new in the question bank, but we only include the new one in the Mapping File. For this we have a STATUS flag: Active / Inactive
- A question can be edited only if the window of time for changes is open.

## Delete

- It only changes the Status of the Question to Inactive
- It is necessary to keep the deleted ones for the Reports

## Add

- We have a Function that keeps control of the Question Number (We have a maximum of 14 for Selection and 5 for Comments).
- Each Question Number must be unique in each Term
- Ask the user to Insert the question in the first available space (number) or at the end (next number available).
- For Multi-section and Cross-Listed Courses, find the first “common to all” available number.

## The KEY is the NEW Question ID Format



2017-2-1-1-1-1-1-AS-30000475-x-x-PHY 213-013-1-1-1

Section Level Question

2017-2-1-1-1-1-1-AS-30000480-x-REC-STA 296-x-2-2-1

Event Level Question - REC

Cross-listed Course Question

2018-1-1-1-1-1-1-PU/ME/ME/AS-30000450/30000342/30000334/30000482-x-x-ANA 612/PGY 612/GRN 612/BIO 612-001-1-1-2

# Let's see the App



Question Bank 2.0

My contact info:

Brett K. McDaniel, M.Ed

Manager, Planning and Assessment Technology

University of Kentucky

[brett.mcdaniel@uky.edu](mailto:brett.mcdaniel@uky.edu)

