



Bluenotes **GLOBAL** 2018
CONFERENCE

last updated: May 10, 2018

Conference
Program

AUGUST 7-10

2018



Full Steam Ahead: Using Data to Lead the Way to Improve, Enhance, and Shape the Future of Higher Education



About eXplorance

eXplorance, the leading provider of Learning Experience Management (LEM) solutions, empowers organizations in making the right decisions with fact-based learning analytics. Our offerings, Blue® and Bluepulse®, enable organizations to benchmark, assess, analyze, improve, and monitor progress.

Founded in 2003, eXplorance is a privately held corporation based in Montreal, Canada with offices in APAC, Europe, and Latin America. eXplorance's Melbourne office provides services and support to clients throughout the Asia-Pacific region. With employees working around the globe, eXplorance is renowned for its strong customer-focused company culture, and is deemed one of the Best Workplaces in Canada by the Great Places to Work Institute®. Recognized for its growth, technical innovation, and entrepreneurship, eXplorance is listed in Deloitte's North American Technology Fast 500™.

eXplorance's clients include academic institutions such as Monash University, the University of New South Wales, the University of Melbourne, the University of Adelaide, the National University of Singapore, the University of Auckland, Princeton University, UC Berkeley, University of Pennsylvania, University of Toronto, Zayed University, University of Louisville, Bowdoin College, IESE Business School, Xi'an Jiaotong-Liverpool University, UDLAP, and Liverpool John Moores University and many more.





eXplorance

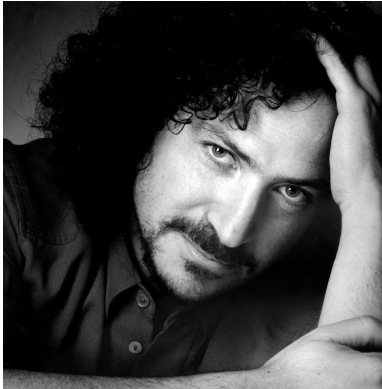
- eXplorance Office
- eXplorance Satellite Employee
- 112 global employees

Blue Users Worldwide

- 23 Countries
- 330 Institutions and growing...



Keynote Speaker



Mr. David Berman, FGDC, RGD, CPACC

Keynote Address: eAccessibility for Higher Education Survey and Course Evaluation Administrators: *Easy Steps for Including Your Entire Audience*

Mr. David Berman, FGDC, RGD, CPACC helps organizations get great things done, through the motivation and techniques he provides for applying strategy, design, ethics, and creative branding and communications to business problems. He has over 30 years of experience in inclusive design and strategic communications. As an internationally-acclaimed expert speaker, communications strategist, graphic designer, typographer, and ethics chair, his thought-provoking keynotes and workshops have brought him to over 50 countries.

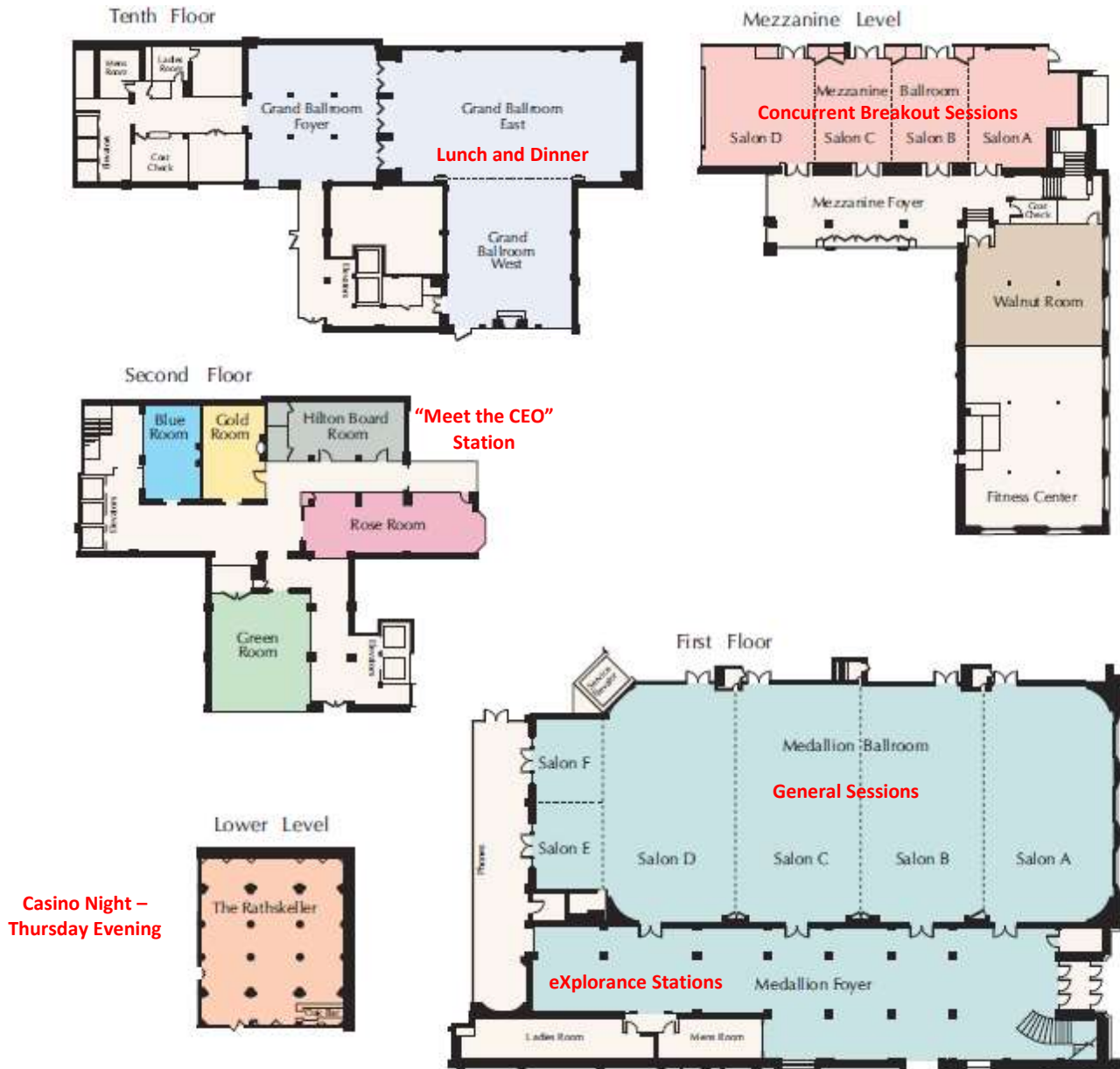
David is also an Invited Expert to the W3C, the publishers of the WCAG standard for e-accessibility.

David Berman is one of perhaps 100 people globally to hold CPACC certification, the World's only certification for accessibility professionals. (This certification is issued by the US-based IAAP (International Association of Accessibility Professionals). IAAP is a division of G3ICT, for which David is an International Advisor.

More information about David Berman and his distinguished career is available at: <https://davidberman.com/>.



The Seelbach Hotel



Please note:

- **General sessions** (Keynote Speaker, CEO update, structured networking) will be in the Medallion Ballroom (First Floor).
- **eXploration stations** will be in the Medallion Foyer (First Floor).
- **Concurrent breakout sessions** will be on the Mezzanine Level.
- **Lunch and dinner** will be in the Grand Ballroom (10th Floor).
- **"Meet the CEO" station** will be in the Hilton Board Room (2nd Floor).
- **Casino Night (Thursday Evening)** will be in the Rathskeller Room (Lower Level).
- **Murder Mystery (Thursday Evening)** will be in The Oak Room (Main Floor – not pictured above).



Speak with eXplorance Staff

Wednesday, August 8			
"I need help with Blue functionality" (Support station)	Michael Cochrane <i>Customer Support Engineer</i>	Arturo Morales <i>Software Support Engineer</i>	Andres Rodriguez <i>Customer Support Representative</i>
"I have feedback" (Product Management station)	Zelbrey Bedard <i>VP, Product Management</i>	Georges Geha <i>VP, Product Management</i>	
"I have challenges" (Consultant station)	Raluca Druta <i>Consultant, Professional Services</i>	Fernando Sanchez <i>Consultant, Professional Services</i>	Elizabeth Guzman <i>Manager, Professional Services</i>
Meet the Executive Team	Charles Assaf, <i>Chief Revenue Officer</i> Tim Brennan, <i>General Manager, Asia-Pacific</i> Ian Haugh, <i>VP, Business Development</i> Long Hua, <i>Chief Product Officer</i>		Jonathan Lapierre, <i>Chief Technology Officer</i> Milt Vadrhanis, <i>VP, Global Services</i> Yeona Jang, <i>EVP, CPEG</i>
Thursday, August 9			
"I need help with Blue functionality" (Support station)	Michael Cochrane <i>Customer Support Engineer</i>	Arturo Morales <i>Software Support Engineer</i>	Andres Rodriguez <i>Customer Support Representative</i>
"I have feedback" (Product Management station)	Zelbrey Bedard <i>VP, Product Management</i>	Georges Geha <i>VP, Product Management</i>	
"I have challenges" (Consultant station)	Raluca Druta <i>Consultant, Professional Services</i>	Fernando Sanchez <i>Consultant, Professional Services</i>	Elizabeth Guzman <i>Manager, Professional Services</i>
Meet the Executive Team	Charles Assaf, <i>Chief Revenue Officer</i> Tim Brennan, <i>General Manager, Asia-Pacific</i> Ian Haugh, <i>VP, Business Development</i> Long Hua, <i>Chief Product Officer</i>		Jonathan Lapierre, <i>Chief Technology Officer</i> Milt Vadrhanis, <i>VP, Global Services</i> Yeona Jang, <i>EVP, CPEG</i>
Friday, August 10			
"I need help with Blue functionality" (Support station)	Michael Cochrane <i>Customer Support Engineer</i>	Arturo Morales <i>Software Support Engineer</i>	Andres Rodriguez <i>Customer Support Representative</i>
"I have feedback" (Product Management station)	Zelbrey Bedard <i>VP, Product Management</i>	Georges Geha <i>VP, Product Management</i>	
"I have challenges" (Consultant station)	Raluca Druta <i>Consultant, Professional Services</i>	Fernando Sanchez <i>Consultant, Professional Services</i>	Elizabeth Guzman <i>Manager, Professional Services</i>
Meet the Executive Team	Charles Assaf, <i>Chief Revenue Officer</i> Tim Brennan, <i>General Manager, Asia-Pacific</i> Ian Haugh, <i>VP, Business Development</i> Long Hua, <i>Chief Product Officer</i>		Jonathan Lapierre, <i>Chief Technology Officer</i> Milt Vadrhanis, <i>VP, Global Services</i> Yeona Jang, <i>EVP, CPEG</i>



Tuesday, August 7

8:00 AM to 9:45 AM	
<p style="text-align: center; color: #0056b3;">Workshop: Track 1</p> <p style="text-align: center;">End-to-End Automation of a Course Evaluation Process with Blue</p> <p style="text-align: center;">Instructors: Fernando Sanchez and Arturo Morales <i>Second Floor – Blue Room</i></p>	<p style="text-align: center; color: #c00000;">Workshop: Track 2</p> <p style="text-align: center;">How to Do Things More Efficiently in Blue? Blue Tips & Tricks</p> <p style="text-align: center;">Instructor: Raluca Druta <i>Second Floor – Gold Room</i></p>
9:45 AM to 10:15 AM	
Morning Break	
10:15 AM to Noon	
<p style="text-align: center; color: #0056b3;">Workshop: Track 1</p> <p style="text-align: center;">Learning How to use the Blue Reporting Capability to Build Reports for Varying Stakeholder Needs</p> <p style="text-align: center;">Instructors: Elizabeth Guzman and Andres Rodriguez <i>Second Floor – Blue Room</i></p>	<p style="text-align: center; color: #c00000;">Workshop: Track 2</p> <p style="text-align: center;">End-to-End Automation of a Course Evaluation Process with Blue</p> <p style="text-align: center;">Instructors: Fernando Sanchez and Arturo Morales <i>Second Floor – Gold Room</i></p>
Noon to 1:00 PM	
Lunch <i>Grand Ballroom</i>	
1:00 PM to 2:45 PM	
<p style="text-align: center; color: #0056b3;">Workshop: Track 1</p> <p style="text-align: center;">Things to Check for When Something Goes Wrong</p> <p style="text-align: center;">Instructors: Margot MacNutt and Michael Cochrane <i>Second Floor – Blue Room</i></p>	<p style="text-align: center; color: #c00000;">Workshop: Track 2</p> <p style="text-align: center;">Learning How to use the Blue Reporting Capability to Build Reports for Varying Stakeholder Needs</p> <p style="text-align: center;">Instructors: Elizabeth Guzman and Andres Rodriguez <i>Second Floor – Gold Room</i></p>
2:45 PM to 3:15 PM	
Afternoon Break	
3:15 PM to 5:00 PM	
<p style="text-align: center; color: #0056b3;">Workshop: Track 1</p> <p style="text-align: center;">How to Do Things More Efficiently in Blue? Blue Tips & Tricks</p> <p style="text-align: center;">Instructor: Raluca Druta <i>Second Floor – Blue Room</i></p>	<p style="text-align: center; color: #c00000;">Workshop: Track 2</p> <p style="text-align: center;">Things to Check for When Something Goes Wrong</p> <p style="text-align: center;">Instructors: Margot MacNutt and Michael Cochrane <i>Second Floor – Gold Room</i></p>
7:00 PM to 9:00 PM	
<p>Opening Night Reception Belle of Louisville</p> <p><i>Please be in the hotel lobby no later than 6:00 PM for transportation to the riverfront. Boarding for the Belle of Louisville will begin at 6:30 PM.</i></p>	



Tuesday, August 7

8:00 AM to 9:45 AM

Thought Leadership Roundtable [Invitation-only session]
Closing the Feedback Loop and Updates from Bluenotes Think Tank 2017 (part 1)
Facilitator: Samer Saab
Second Floor – Green Room

9:45 AM to 10:15 AM

Morning Break

10:15 AM to Noon

Thought Leadership Roundtable [Invitation-only session]
Closing the Feedback Loop and Updates from Bluenotes Think Tank 2017 (part 2)
Facilitator: Samer Saab
Second Floor – Green Room

Noon to 1:00 PM

Lunch
Grand Ballroom

1:00 PM to 2:45 PM

Thought Leadership Roundtable [Invitation-only session]
Closing the Feedback Loop and Updates from Bluenotes Think Tank 2017 (part 3)
Facilitator: Samer Saab
Second Floor – Green Room

2:45 PM to 3:15 PM

Afternoon Break

3:15 PM to 5:00 PM

Thought Leadership Roundtable [Invitation-only session]
Closing the Feedback Loop and Updates from Bluenotes Think Tank 2017 (part 4)
Facilitator: Samer Saab
Second Floor – Green Room

7:00 PM to 9:00 PM

Opening Night Reception
Belle of Louisville
*Please be in the hotel lobby no later than 6:00 PM for transportation to the riverfront.
Boarding for the Belle of Louisville will begin at 6:30 PM.*



Wednesday, August 8

8:00 AM to 8:45 AM	
Breakfast/Conference Registration <i>Medallion Ballroom</i>	
8:45 AM to 9:45 AM	
Mr. David Berman, Keynote Speaker eAccessibility for Higher Education Survey and Course Evaluation Administrators: <i>Easy Steps for Including Your Entire Audience</i> <i>Medallion Ballroom</i>	
9:45 AM to 10:00 AM	
Morning Break	
10:00 AM to 10:50 AM	
eXplorance Update, Roadmap and Looking Forward Presenter: Samer Saab, eXplorance <i>Medallion Ballroom</i>	
11:00 AM to 11:50 AM	
Leverage the Power of Blue Enrollment Data Integration Presenter: Mohammed Sheraidah, eXplorance <i>Mezzanine Level – Salon A</i>	Institutional Insights: Changes in the Course Evaluation Process Resulting from a Needs Assessment Presenter: Ginny Cockerill, University of Alabama in Huntsville <i>Mezzanine Level – Salon B</i>
	Analytics in Higher Education: The Pathway to Our Future Presenter: Bob Goldstein, University of Louisville <i>Mezzanine Level – Salon D</i>
12:00 PM to 1:00 PM	
Lunch <i>Grand Ballroom</i>	
1:00 PM to 1:50 PM	
Structured Networking <i>Medallion Ballroom</i>	
2:00 PM to 2:50 PM	
Get More Insights by Taking Blue’s Reporting to the Next Level Presenter: Krime Bouaou, eXplorance <i>Mezzanine Level – Salon A</i>	Title: TBD Presenter: TBD, Clark State Community College <i>Mezzanine Level – Salon B</i>
Faculty Development Perspectives on Formative Feedback Technology Presenter: Cherie Werhun, Sheridan College <i>Mezzanine Level – Salon C</i>	



2:50 PM to 3:15 PM	
Afternoon Break	
3:15 PM to 4:05 PM	
<p>What's New with Blue Reporting and Analytics Presenters: Long Hua and Georges Geha, eXplorance <i>Mezzanine Level – Salon A</i></p>	<p>Blue 7 Presenter: Daniel Glover, University of Minnesota <i>Mezzanine Level – Salon B</i></p>
<p>Title: TBD Presenter: Julie Mulvey, Durham University <i>Mezzanine Level – Salon C</i></p>	<p>Title: TBD Presenter: Peter Jones, California Institute of Integral Studies <i>Mezzanine Level – Salon D</i></p>
4:15 PM to 5:05 PM	
<p>Make the Most of Course Evaluations by Leveraging Advanced and Powerful Data Structures Presenters: Elizabeth Guzman and Raluca Druta, eXplorance <i>Mezzanine Level – Salon A</i></p>	<p>Title: TBD Presenter: Salwa Al Rais, Zayed University <i>Mezzanine Level – Salon B</i></p>
<p>Title: TBD Presenter: Diana Lama, The College of New Rochelle <i>Mezzanine Level – Salon C</i></p>	<p>Benchmarking Data Consortium Panelists: TBD <i>Mezzanine Level – Salon D</i></p>
5:05 PM to 5:15 PM	
<p>Bluenotes EMEA Door Prize Drawing Presentation of Charity Check (\$2,000) <i>Medallion Ballroom</i></p>	



Thursday, August 9

8:00 AM to 8:45 AM	
Breakfast <i>Medallion Ballroom</i>	
8:55 AM to 9:45 AM	
How to Optimize Course Evaluation Response Rates with Strategies, Techniques, and Features Presenter: Fernando Sanchez, eXplorance <i>Mezzanine Level – Salon A</i>	Title: TBD Presenter: Stephanie Klein, University of Minnesota <i>Mezzanine Level – Salon B</i>
Assessing the Reliability and Validity of Student Course Evaluations: Ongoing Dialogue Revisited Presenters: Howard Mzumara, Indiana University-Purdue University Indianapolis and Zebrey Bedard, eXplorance <i>Mezzanine Level – Salon C</i>	
9:45 AM to 10:00 AM	
Morning Break	
10:00 AM to 10:50 AM	
From Zero to One – eXplorance – The Origins Presenter: Samer Saab, eXplorance <i>Medallion Ballroom</i>	
11:00 AM to 11:50 AM	
How to Transform Your Course Evaluation Process to be More Forward Looking Presenters: Long Hua and Zebrey Bedard, eXplorance <i>Mezzanine Level – Salon A</i>	Title: TBD Presenter: Dr. Jeff Hieb, University of Louisville <i>Mezzanine Level – Salon B</i>
LMS Integration with eXplorance Blue, (from Blackboard to Canvas) Presenters: Brett K McDaniel and Kelita Mayorga, University of Kentucky <i>Mezzanine Level – Salon C</i>	
12:00 PM to 1:00 PM	
Lunch <i>Grand Ballroom</i>	
1:00 PM to 1:50 PM	
Welcome to BlueX Release 1 Presenter: Jeff Anderson, eXplorance <i>Mezzanine Level – Salon A</i>	Things to Consider When Building Data Feeds Presenter: Eowyn Ellison, University of Maryland <i>Mezzanine Level – Salon B</i>



2:00 PM to 2:50 PM	
<p>Engage Your instructors in Professional development with Bluepulse Presenters: Fernando Sanchez and Raluca Druta, eXplorance <i>Mezzanine Level – Salon A</i></p>	<p>Implementing Student Evaluation of Teaching using eXplorance-Blue in two Faculties/Schools at the Vaal University of Technology Presenter: Lesego (Bruce) Matee, Vaal University of Technology <i>Mezzanine Level – Salon B</i></p>
2:50 PM to 3:15 PM	
Afternoon Break	
3:15 PM to 4:05 PM	
<p>Title: TBD Presenters: Samer Saab, eXplorance and Tom Dohm, University of Minnesota <i>Mezzanine Level – Salon A</i></p>	<p>Determining Student Sentiment Using Blue Text Analytics (BTA): Implementation of Grade Pathways Presenters: Becky Patterson and Bob Goldstein, University of Louisville <i>Mezzanine Level – Salon B</i></p>
4:15 PM to 5:05 PM	
5:05 PM to 5:15 PM	
<p>Bluenotes APAC Door Prize Drawing Presentation of Charity Check (\$3,000) <i>Medallion Ballroom</i></p>	
6:00 PM to 7:00 PM	
<p>Dinner <i>Grand Ballroom</i></p>	
7:00 PM to 9:00 PM	
<p>Social Activity Casino Night <i>The Rathskeller</i></p>	<p>Social Activity Murder Mystery <i>The Oak Room</i></p>



Friday, August 10

8:00 AM to 8:45 AM	
Breakfast <i>Medallion Ballroom</i>	
8:55 AM to 9:45 AM	
9:45 AM to 10:00 AM	
Morning Break	
10:00 AM to 10:50 AM	
How to Leverage Blue 360 Degree Feedback Reviews at Your Institution Presenter: Krimo Bouaou, eXplorance <i>Mezzanine Level – Salon A</i>	
11:00 AM to 11:30 AM	
eXplorance Immersion Tour Prize Drawing Presentation of Charity Check (\$5,000) <i>Medallion Ballroom</i>	



Session Descriptions

Tuesday, August 7

Workshop: End-to-End Automation of a Course Evaluation Process with Blue

Instructors: Fernando Sanchez, Consultant, Professional Services, eXplorance
Arturo Morales, Software Support Engineer, eXplorance

In this workshop, we will show you how to automate a course evaluation process from launch to reporting. The topics will include how to automate data import to Blue, evaluation windows using the “Dynamic days” feature, departmental questionnaire selections, report distributions, and more.

Workshop: Learning How to use the Blue Reporting Capability to Build Reports for Varying Stakeholder Needs

Instructors: Elizabeth Guzman, Manager, Professional Services, eXplorance
Andres Rodriguez, Customer Support Representative, eXplorance

In this workshop, we will show you how to build individual and aggregate reports using Blue reporting features to meet varying stakeholder needs. The topics will include how to create reports for stakeholders at various levels, how to create the comparative and normative analyses, how to build reports in condensed layouts, how to build summary reports to meet your stakeholders’ needs, and more.

Workshop: Things to Check for When Something Goes Wrong

Instructors: Margot MacNutt, Training Manager, eXplorance
Michael Cochrane, Customer Support Engineer, eXplorance

Why aren’t my emails going out? Why aren’t students able to access the evaluation forms? Why is the wrong teacher being evaluated? Why are my report viewers all wrong? In this workshop, you will learn how to troubleshoot issues like the above. You will also gain knowledge of what to check for and how to fix and prevent them from happening again.

Workshop: How to Do Things More Efficiently in Blue? Blue Tips & Tricks

Instructor: Raluca Druta, Consultant, Professional Services, eXplorance

Blue is a very feature-rich system and provides many different ways of implementing solutions. Knowing the tricks that will help you to do things more efficiently in Blue is always of use for any Blue Administrator. Per popular demand, this workshop will also cover an overview of the redesigned Help Center with tips on how to locate answers to specific questions.

Thought Leadership Roundtable: Closing the Feedback Loop and Updates from Bluenotes Think Tank 2017

Facilitator: Samer Saab, CEO, eXplorance

This is an invitation-only closed session where we will recap, discuss, and give general updates stemming from Bluenotes Think Tank 2017 meeting. We will also unveil our 18-24 months roadmap and strategy, in order to continue the dialogue and finalize the positioning.



Wednesday, August 8

Keynote Address: eAccessibility for Higher Education Survey and Course Evaluation Administrators: *Easy Steps for Including Your Entire Audience*

Presenter: Mr. David Berman

Computer-mediated accessibility to information represents the greatest liberation in human history. A substantial proportion of people in our society have some level of physical or mental challenge which can stand in the way of clear communication ... unless we take necessary steps to improve our online content. And when we design for the extremes, everyone benefits.

David Berman will convince you why accessibility and standards are important for everybody: to broaden your audience, to comply with regulations, to drive down costs, or simply to be socially responsible. He also provides in-depth familiarity with Section 508, W3C WCAG 2.0 and PDF/UA success criteria. These guidelines will help your surveys and evaluations be more effective resources for your entire audience, in your classrooms and every part of your schools. You'll also gain familiarity with the assistive technologies that help people with specific disabilities and difficulties.

Session: eXplorance Update, Roadmap and Looking Forward

Presenter: Samer Saab, CEO, eXplorance

As we continue our rapid growth and evolution at eXplorance, we look forward to sharing with you some key business and product updates of the last 12 months. We will share with you the latest and greatest of Blue, Bluepulse, BlueX and DIG. We will also provide you with a glimpse of what the future holds in terms of the evolution of our business and vision.

Session: Leverage the Power of Blue Enrollment Data Integration

Presenter: Mohammed Sheraidah, Executive Solution Architect, eXplorance

In this session, we will cover the fundamentals of Blue's data integration options including the DataSync module, the Data Integrity Gateway, and Blue's API. We will share tangible use cases and examples to illustrate the automation and analytics advantage you can derive from this integration. We will also share current limitations and upcoming integration and automation features that will address these limitations.

Session: Institutional Insights: Changes in the Course Evaluation Process Resulting from a Needs Assessment

Presenter: Ginny Cockerill, Assistant Director of Assessment, University of Alabama in Huntsville

The University of Alabama in Huntsville conducted a Needs Assessment process this past year in collaboration with stakeholders across campus. The resulting insights were used to develop an action plan for changes to the course evaluation process, both in distribution and reporting. One aspect of the results that was particularly interesting was the insights gathered from faculty about their hesitations, reservations, and objections to the course evaluation process. This presentation will briefly overview the Needs Assessment process followed and the insights gained—especially those from the faculty perspective. The changes that have already been put in place will be discussed as well as the action plan now in place for the next few semesters.

Session: Analytics in Higher Education: The Pathway to Our Future

Presenter: Bob Goldstein, Vice Provost for Institutional Research, Effectiveness, and Analytics, University of Louisville

This session will focus on the perspective of analytics in higher education from institutional leadership. An in-depth examination of the institutional framework that needs to be in place to ensure the successful use of analytics and data driven decisions will be discussed.



Session: Get More Insights by Taking Blue's Reporting to the Next Level

Presenter: Krime Bouaou, Director Product Knowledge and Engagement, eXplorance

In this session, we will go over Blue's reporting functionality in close detail with examples. We will highlight some untapped reporting features that you can use to take Blue reporting to the next level for further insights. This will enhance Blue administrators' understanding of Blue's reporting capabilities and possibilities.

Session: Faculty Development Perspectives on Formative Feedback Technology

Presenter: Cherie Werhun, Associate Dean, Teaching and Learning, Sheridan College

Implementation (from concept to adoption to integration) of any technological tool requires a deep understanding of the "user" in context. The adoption and integration of educational technology rests on a complex network of variables fundamental to educational development (i.e., learning outcomes, formative feedback, active learning, and inclusive pedagogy) and a host of psychological variables related to faculty development in teaching and learning. Embracing a learner-focused perspective and drawing from our recent experiences at Sheridan College, we discuss these variables as they intersect, complicate, and inform the educational development components of our emerging journey to implement Blue Pulse within our learning community.

Session: What's New with Blue Reporting and Analytics

Presenters: Long Hua, Chief Product Officer, eXplorance

Georges Geha, VP, Product Management, eXplorance

In this session, we will share the many new capabilities available to Blue users in reporting and analytics. We will cover Blue 7+ reporting features, showcase Blue Text Analytics version 2, and share with you the new faculty and administrator dashboards.

Session: Make the Most of Course Evaluations by Leveraging Advanced and Powerful Data Structures

Presenters: Elizabeth Guzman, Manager, Professional Services, eXplorance

Raluca Druta, Consultant, Professional Services, eXplorance

In this session, we will share creative use cases of Blue data structure to support advanced course evaluation scenarios, including cascaded evaluations, evaluations of instructors and teaching assistants, and more.

Thursday, August 9

Session: How to Optimize Course Evaluation Response Rates with Strategies, Techniques, and Features

Presenter: Fernando Sanchez, Consultant, Professional Services, eXplorance

In this presentation, we will cover the many aspects of optimizing response rates in course evaluations. We will go over various how to's from drafting email invites and reminders, to leveraging Blue's deep LMS integrations, and to implementing grade and course registration pathways. We will also share stories and use cases from actual Blue user implementations that achieved relatively high response rates.

Session: Assessing the Reliability and Validity of Student Course Evaluations: Ongoing Dialogue Revisited

Presenters: Howard Mzumara, Director of Testing Center, Indiana University-Purdue University Indianapolis

Zelbrey Bedard, VP, Product Management, eXplorance

To what extent do student ratings of teaching provide reliable and valid measures for assessing the efficacy and effectiveness of courses and teaching? This session will explore how the Reliability Assessment report block in Blue can be used to provide a measure of the accuracy and usefulness (i.e., validity) of student ratings of courses and teaching. In



addition, the presentation will provide a review of related literature to stimulate participants to engage in an interactive discussion on best practices for assessing the reliability and validity of student evaluations of teaching.

Session: From Zero to One – eXplorance – The Origins
Presenter: Samer Saab, CEO, eXplorance

Let us take you on an intimate journey into the inception of eXplorance. We will tell those stories behind the making of Blue, of our early stage financial difficulties, about the great people that worked for us, and about those that worked with us, and share with you the roots of our transformation towards becoming the fast growing EdTech organization that we are today. You will learn how eXplorance has overcome, against all odds, as a David, one that shall never be a Goliath.

Session: How to Transform Your Course Evaluation Process to be More Forward Looking
Presenters: Long Hua, Chief Product Officer, eXplorance
Zelbrey Bedard, VP, Product Management, eXplorance

In this session, we will cover the fundamentals of cascaded course evaluation implementation in Blue and how it can be used to transform course evaluation to be more forward looking for improvement in teaching and learning. We will also go over how a few Blue institutions already have leveraged Blue 7 features to further support this concept including QBank, Advanced Relationship Tables, and more.

Session: LMS Integration with eXplorance Blue, (from Blackboard to Canvas)
Presenters: Brett K McDaniel, Academic Technical Support Service Manager, University of Kentucky
Kelita Mayorga, Technical Support Specialist, University of Kentucky

This presentation will explain the details of how the University of Kentucky (UK) implemented the integration with both Blackboard and then Canvas, after we switched to Canvas. An in depth look at the deeper integration with Canvas will show how the integration with Canvas can improve the student and instructor experience. Hopefully, those using Canvas will be able to take away some knowledge in their implementation and integration.

Session: Welcome to BlueX Release 1
Presenter: Jeff Anderson, Director, Sales Engagement, eXplorance

In this session, we will demonstrate in detail all of the features and functionality of BlueX Release 1, the new generalized survey solution. We will also discuss BlueX's generalized survey functionality vs. Blue's current institutional survey functionality so that you use these tools in the right places.

Session: Engage Your instructors in Professional development with Bluepulse
Presenters: Fernando Sanchez, Consultant, Professional Services, eXplorance
Raluca Druta, Consultant, Professional Services, eXplorance

In this session, we will cover the latest and greatest of Bluepulse features and functionality and how it supports continuous improvement in teaching and learning. We will also go over how the linkage of Bluepulse with Blue can make for greater levels of student and instructor engagement in the development process.

Session: Implementing Student Evaluation of Teaching using eXplorance-Blue in two Faculties/Schools at the Vaal University of Technology
Presenter: Lesego (Bruce) Matee, Manager: Evaluation Unit, Vaal University of Technology

In this paper, we share experiences of the implementation process of a fully-fledged online evaluation system using Blue at the Vaal University of Technology (VUT). The paper seeks to reveal the experiences of the faculties that are utilizing the



evaluation system and how these have impacted on their conception of the evaluation culture. As the implementation of this system is pioneering in nature and is based on the national imperatives of quality enhancement, the paper will further share the impact of the approach on general institutional culture and more specifically on teaching and learning culture at VUT. Given the timely relevance of Blue to the national and institutional imperatives of improving quality teaching, the envisaged reports would enable our institution to develop teaching and learning processes that are improving continuously as academics and other stakeholders collaborate to share good practices and solve shared problems. An equally opportune benefit of the process in the usage of the reports in informing a variety of institutional policies related to teaching and learning such as the student evaluation of teaching policy and the university teaching excellences awards.

Session: Determining Student Sentiment Using Blue Text Analytics (BTA): Implementation of Grade Pathways

Presenters: Becky Patterson, Executive Director for Institutional Research and Planning, University of Louisville

Bob Goldstein, Vice Provost for Institutional Research, Effectiveness, and Analytics, University of Louisville

In fall 2016, the University of Louisville (UofL) implemented university-wide priority grade access for students completing all their course evaluations after two successful pilot projects (fall 2015 and spring 2016). To determine if the implementation of priority grade access negatively influenced evaluation results, UofL used BTA to gauge student sentiment expressed through comments within the College of Arts and Sciences (UofL's largest academic unit). This presentation will include: results from analyzing fall 2014, fall 2015, and fall 2016 comments, a summary of the BTA functionality in Blue, best practices and tips for conducting qualitative analysis, as well as lessons learned from UofL's use of BTA.

Friday, August 10

Session: How to Leverage Blue 360 Degree Feedback Reviews at Your Institution

Presenter: Krino Bouaou, Director, Product Knowledge and Engagement, eXplorance

In this session, we will go over specific scenarios of implementing Blue 360 projects and reports. We will also share use cases from Blue institutions, and show how they leverage 360 degree feedback data to assess the competencies of students who are about to start their careers.



Congratulations to the Bluenotes Americas 2017 Award Winners

Best New Presenter

Thinking Beyond the Traditional 'Instructor Evaluation' - Using ONE Simplified Survey to Evaluate Instructors

Nick Ullrich, Data Support Specialist, Galen College of Nursing

Abstract: Is your intuition struggling with ideas on how to easily evaluate instructors? Galen College of Nursing will present an alternative way for supervisors to evaluate their instructors using a simplified survey. By using one open-sourced link generated through Blue, we converted an existing paper and pencil evaluation tool for supervisors to evaluate their faculty members more easily and effectively. During this session, we will preview an evaluation, show an example of the results, and discuss the benefits and limitations this method offers our College.

Best Presentations

Blue Advanced Relationship Tables (ART) and Other Musings

Daniel Glover, Developer II, University of Minnesota

Abstract: So maybe you have heard about Blue Advanced Relationship Tables (ART). Are you wondering how they can help manage your survey needs? We will demonstrate the approach we have found to be most effective in getting supervisory information whose source of truth is currently distributed across the organization in to Blue. Then we will discuss how we expect to leverage this process to facilitate the new ART and in managing dynamic report viewership access coming to Blue.

Is Over-surveying Undermining your Efforts? Create a University-wide Survey Administration Process FTW

Katie Partin, Assistant Director for Institutional Effectiveness, University of Louisville

Katie Bixby, Institutional Effectiveness Analyst II, University of Louisville

Abstract: As an institution, we must pay greater attention to a) the rationale for and quality design of surveys, b) the coordination of survey administration through one central office to maximize response rates, and c) the meaningful use of results to inform and guide continuous program improvement. Therefore, UofL has facilitated a university-wide survey administration process. During this session, attendees will learn about how the process was created and the required components for a successful implementation.





Bluenotes **GLOBAL** 2018
CONFERENCE

