



# Centralize, Track and Link your Teaching Activities with Bluepulse

---

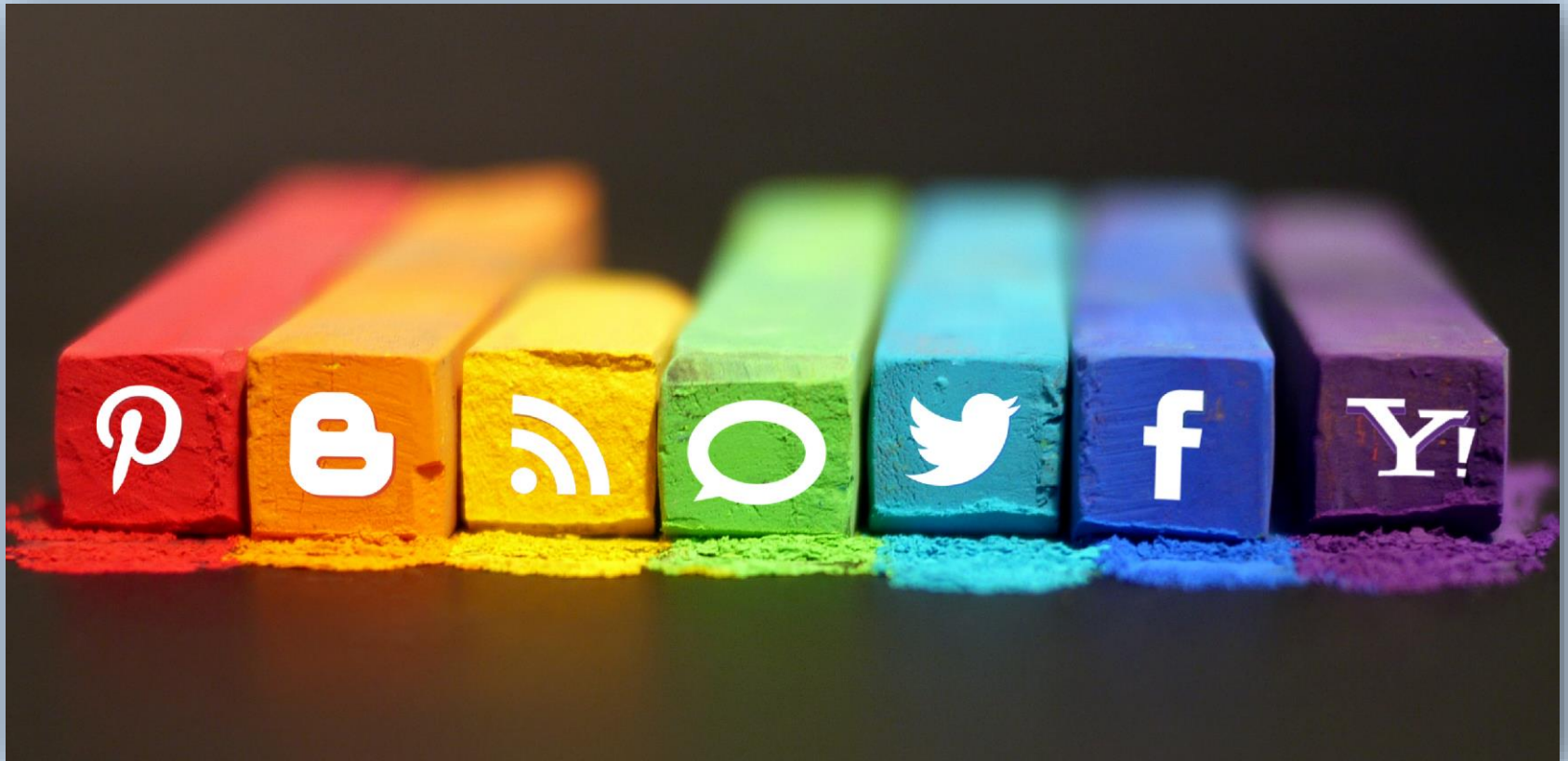
Nitin Sharma



# The Future of Feedback



# How social are you?

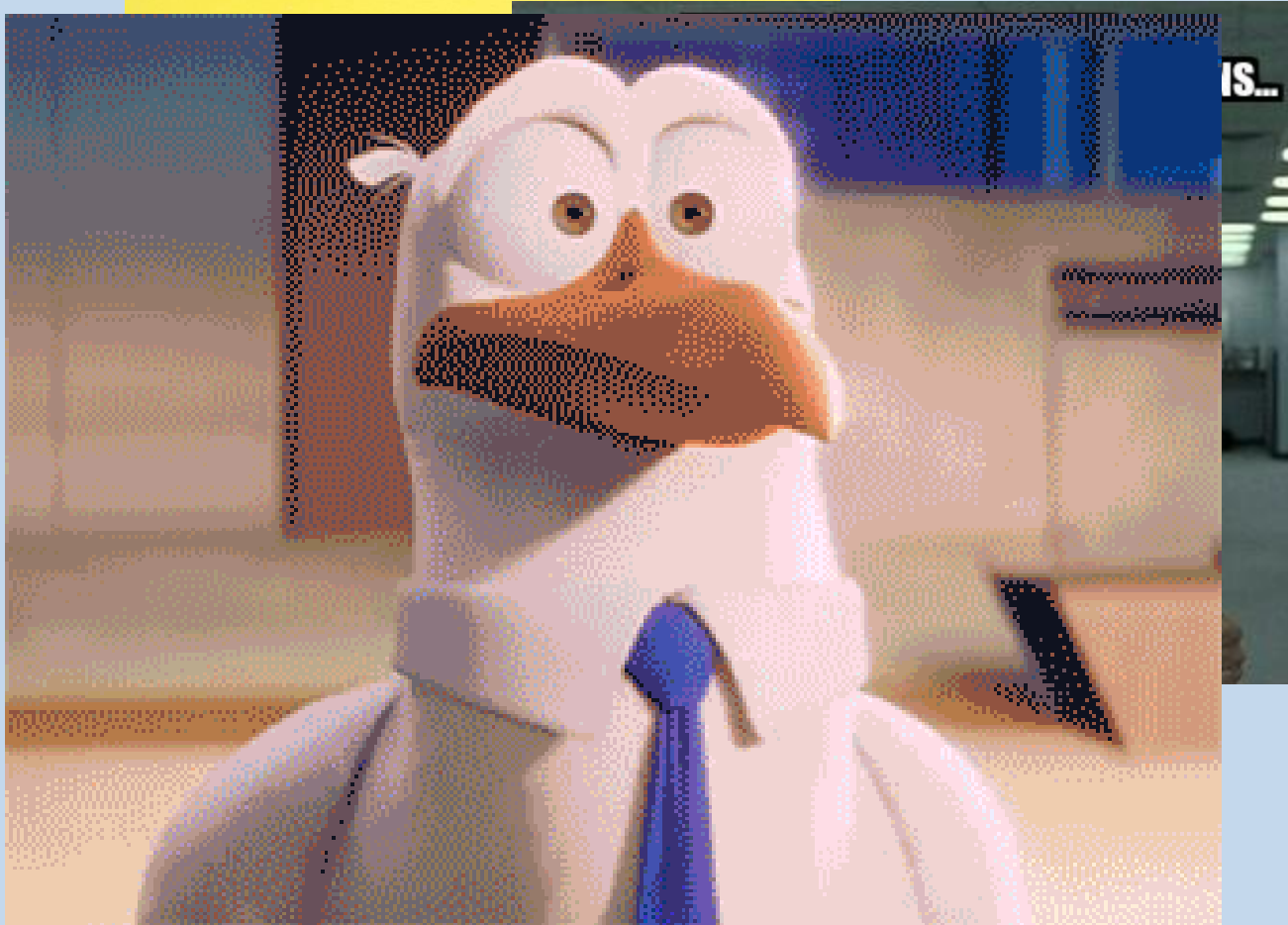




Fostering a Human Connection across the full spectrum of the Educational Experience

bluepulse

Not made for..





## Improving Student Satisfaction in Institutional Services

- *“The teaching staff in the course motivated me to do my best work”*
- *“Do you feel that the new facilities are conducive to a more collaborative environment?”*
- *“How do you find the new Wi-Fi service in the library?”*





NORTHWESTERN  
UNIVERSITY

## Faculty and Student Support

- *“... Bluepulse is leveraged to collect anonymized student data throughout the entire academic year. The principal goal of this initiative is to develop new learning and teaching aid projects, for faculty.”*
- *“... Faculty at Northwestern, uses Bluepulse to listen to the student voice on an ongoing basis.”*



## Centralized Feedback on T&L

- *“Thinking of your lectures, which teaching and learning strategies used so far have best supported your learning?”*
- *“Which teaching and learning strategies would you like to see more of?”*



## Faculty and Reporting

- *“The pace of the course this week was..”*
- *“Do you believe you could explain the concepts covered today to a classmate if they were absent today?”*
- *Dr. Parrish Waters uses the engagement & student responses in Bluepulse to populate and differentiate his tenure report.*

bluepulse

How it works

Demo