

---

# Maroon, Gold, and Blue

## Continuous Improvement in Student Ratings of Teaching Administration and Outcomes

Stephanie Klein, PhD  
Office of Measurement Services  
University of Minnesota

Bluenotes Global User Conference, August 4-7, 2019



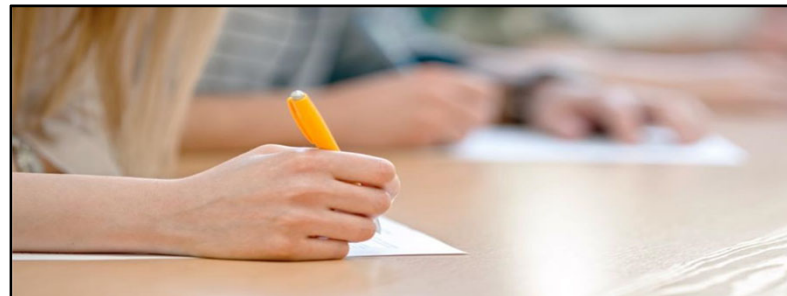
UNIVERSITY OF MINNESOTA

Driven to Discover<sup>SM</sup>

# Office of Measurement Services



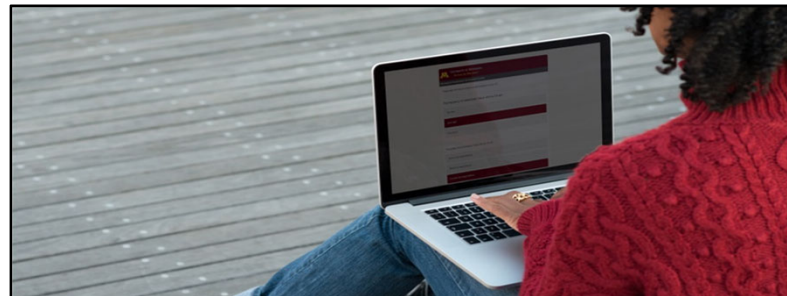
Student Ratings of Teaching (SRT)



Exams



Minnesota Statewide Testing Program



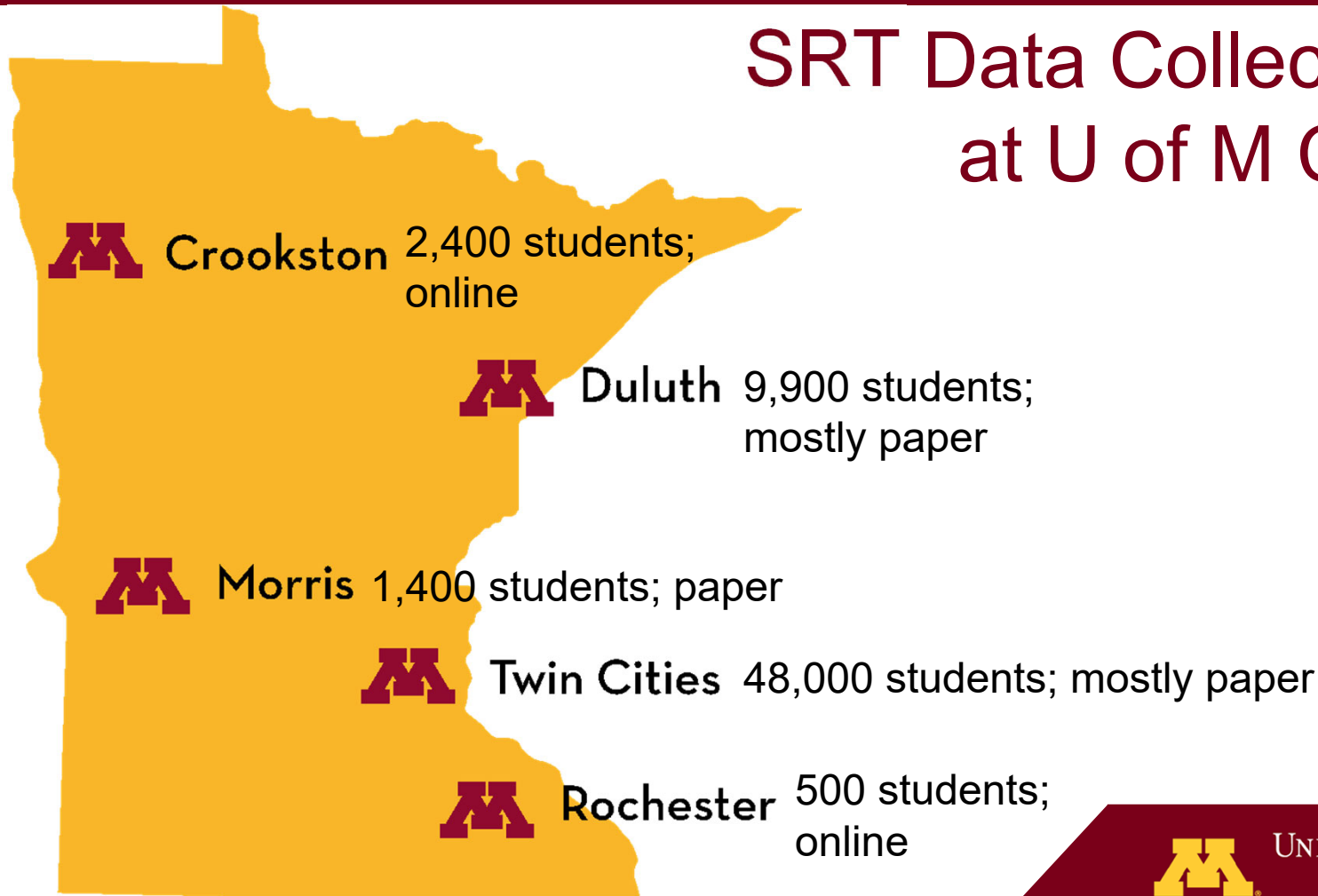
Minnesota Center for Survey Research

## SRT at U of M (continued)

- Program and policy owner: Provost
- Program administrator and business owner: OMS
- (Mostly) centralized policy, administration, content
- Blue Implementation
  - >70% of ratings still completed on paper
  - Online reports (not paper comments - returned to profs)
  - Migration (self-hosted to cloud) completed Spring 2019



# SRT Data Collection Mode at U of M Campuses



Hspiki#r#li#  
(glssp#



>140 statewide;  
paper



UNIVERSITY OF MINNESOTA  
Driven to Discover<sup>SM</sup>

## Last Year: Administration

- Expanded data collection windows
- Pilot and launch of online/blended learning items
- Removal of unused non-core items
- Basic housekeeping (e.g., updating outdated report intros & content on others' websites)



UNIVERSITY OF MINNESOTA

Driven to Discover<sup>SM</sup>

# This Year's Updates and Housekeeping

- Administration
  - Updates to system messages
  - First academic health unit (Public Health) transitioning from separate platform
- Outcomes
  - Additional guidance for instructors, including response rate initiative
  - Subgroup reporting w/ Blue 7 (e.g., Bioethics vs. Epidemiology)



UNIVERSITY OF MINNESOTA

Driven to Discover<sup>SM</sup>

# Administration: Updates to System Messages

- Intro intended to focus ratings on full term, learning experience
- Reformatted, shorter messages to students, report readers
- New email to instructors when data collection begins (online & paper)

This message was sent by:  
Office of Measurement Services  
103 University Stores South, 879 29th Ave SE  
Minneapolis, MN 55414

612-626-0006  
<http://oms.umn.edu/srt>  
[eval@umn.edu](mailto:eval@umn.edu)

[Read our privacy statement](#)

©2017 Regents of the University of Minnesota. All rights reserved. The University of Minnesota is an equal opportunity educator and employer.

This email was sent to M Pride subscribers and the systemwide administrative email list (AEL) by University Relations, 100 Church St S.E., Minneapolis, MN, 55455, USA.

[subscribe to this list](#) | [unsubscribe kleins@umn.edu from future M Pride emails](#) | [mass email privacy statement](#)



UNIVERSITY OF MINNESOTA

Driven to Discover<sup>SM</sup>

# Outcomes: Guidance

## A Guide to Improving Response Rates for Office of Measurement Office of the Vice Provost for Faculty

## Connecting Your Teaching Practices with the Student Rating of Teaching Form

Center for Educational Innovation  
University of Minnesota

### Using Student Rating of Teaching (SRT) Results in Evaluating Teaching: A Guide for Department Heads, Chairs, and Review Committee Members

Office of the Executive Vice President and Provost  
Faculty and Academic Affairs  
Updated March 27, 2019

and salary merit increases.

#### The Value and Use of SRT Data

SRT data are useful as a **broad diagnostic tool** to assess instructional quality. Because the data represent *perceptions of instruction* rather than an objective measure of student mastery of content or an expert assessment of quality teaching, their primary value is to describe *how students are experiencing our courses*.

#### What Do University of Minnesota SRT Data Tell Us?

On the Twin Cities campus, the mean for the five instructor items on the SRT was 5.34 (on a 6 point scale) with some minor differences between items (2017-2018 undergraduate data). Standard deviations for individual items ranged from .72-1.17. These data indicate that undergraduate students rate instructional effectiveness highly and that a majority of students either mark "agree" or "strongly agree" on these items.

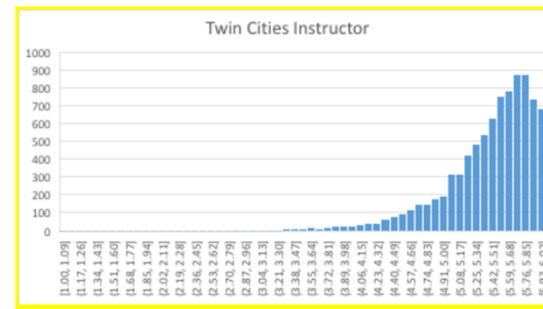


Figure 1. Distribution of scores using data from the 2017-2018 academic year (undergraduate courses, instructor items only). Y axis = course section N. This distribution curve is common in student rating results (Linse, 2017). Source: Office of Measurement Services



# Ongoing/Upcoming

- Continue efforts to improve online response rates
- Discussions with academic health units
- Analysis of results, response rates: old vs. new data collection windows
- Unit level paper to online conversions
- New reporting options with Blue 7



UNIVERSITY OF MINNESOTA

Driven to Discover<sup>SM</sup>

## Up Next / Under Consideration

- Integration with faculty info aggregator
- Response rate analysis: “magic %,” class size considerations
- Priority grade access: very early stages
- Use of Blue Text Analytics - later (when online-administered SRTs are more representative)



UNIVERSITY OF MINNESOTA

Driven to Discover<sup>SM</sup>

# Questions?

UNIVERSITY  
OF MINNESOTA  
Driven to Discover



UNIVERSITY  
OF MINNESOTA  
Driven to Discover



UNIVERSITY  
OF MINNESOTA  
Driven to Discover



UNIVERSITY OF MINNESOTA  
Driven to Discover<sup>SM</sup>

---

# Thank you!

■ ■ ■  
■ ■ ■  
■ ■ ■

**Stephanie Klein, PhD**  
Office of Measurement Services  
University of Minnesota  
Kleins@umn.edu



UNIVERSITY OF MINNESOTA

Driven to Discover<sup>SM</sup>