



MONASH
University

Implementation of Dynamic Report Access for Advanced Report Distribution

Isabelle Li Ying

University Planning and Statistics



Overview

- Student Evaluation of Teaching and Units
- Challenges in administration SETU
- Dynamic Report Access
- Organizational Hierarchy/ Multiple Organizational Hierarchies
- Reporting summary and audience
- How to Set Up Dynamic Report Access
- Questions

Student Evaluation of Teaching and Units

- Student enrolments 83,560 (67,074 EFTSL) across Australian campuses, international locations and centres
- Blue implemented in Semester 2 2016 (replacing in house custom software)

AT A GLANCE¹

STUDENTS

83 560

IN AUSTRALIA

DOMESTIC – 45 219 (54%)

INTERNATIONAL – 27 403 (33%)

OFFSHORE – 10 938 (13%)



MALE: 36 023 (43%)

██

FEMALE: 47 508 (57%)

██

UNSPECIFIED: 29 (<1%)

██



Student Evaluation of Teaching and Units

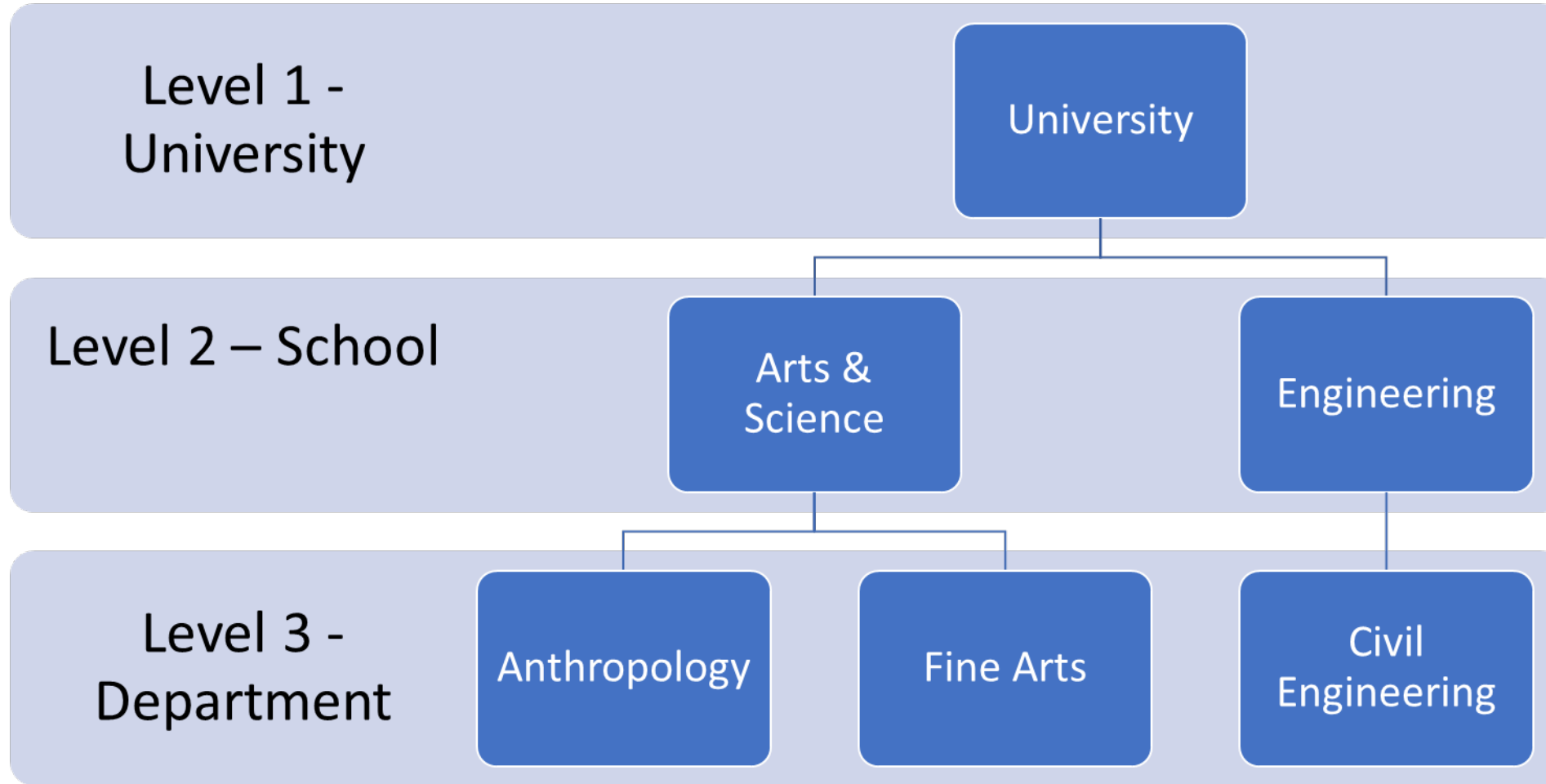
SETU Semester 1 and 2

- ~ 2,500 - 2,800 unit offerings surveyed
- 71,000+ students invited to provide feedback
- Total of 235,000+ individual unit evaluations
- Overall response rate ranging 38-45%

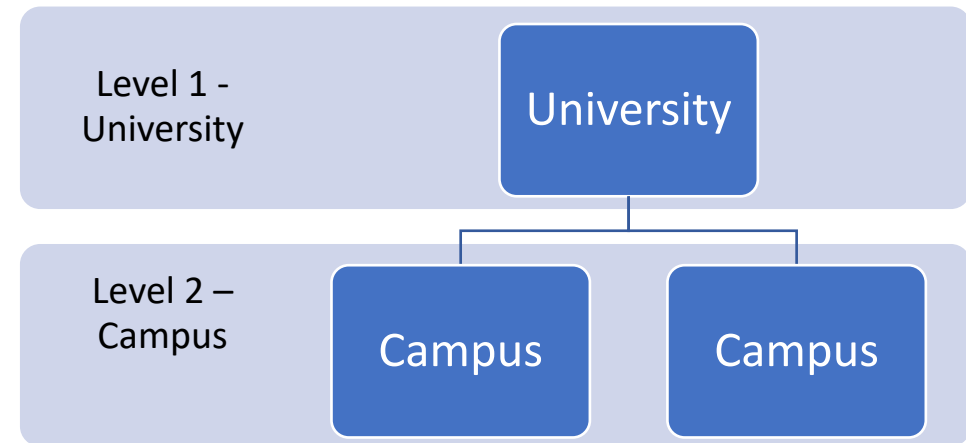
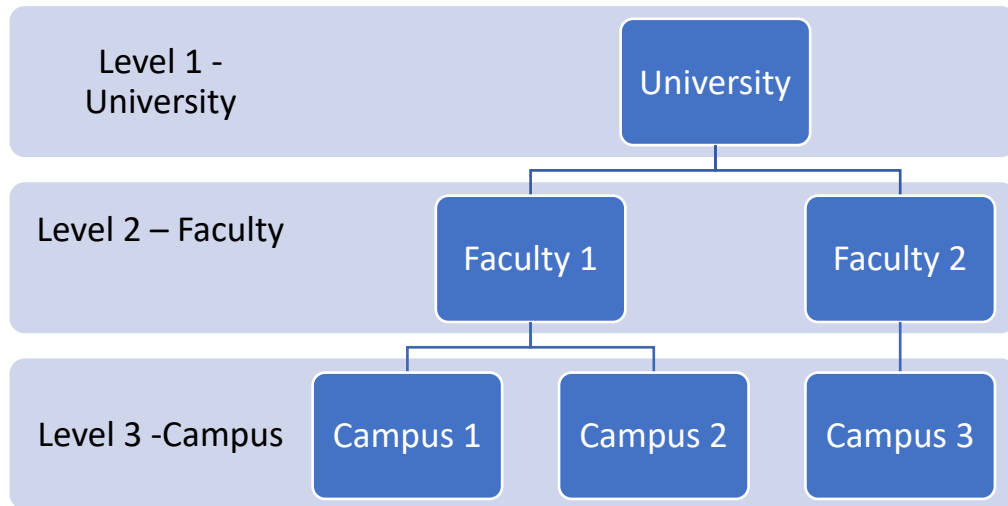
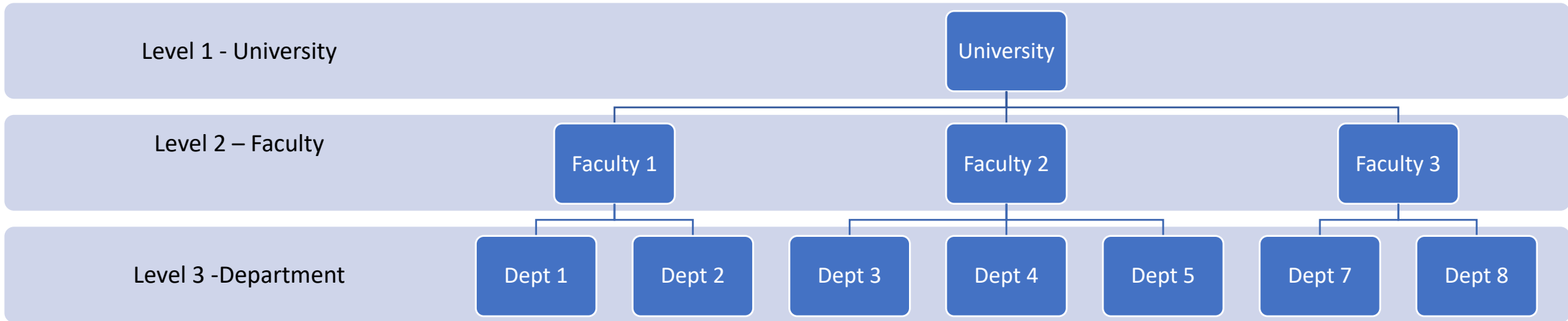
Challenges in administration of SETU

- Data collection and preparation
- Report distribution (granting access to new staff upto 10 reports)
 - ❖ Complex and time consuming task
 - ❖ Prone to error
- Blue 7 – Dynamic Report Access
 - ❖ Reports shared with academic leaders
 - ❖ Access determined by administrative role (e.g dean, associate dean etc)
 - ❖ Institution's organizational structure follow a hierarchical tree model
 - ❖ Reports access continually updated throughout the year
 - ❖ Academic leaders require access to historical reports

Organizational Hierarchy



Multiple Organizational Hierarchies



Reporting summary and audience

Report	Report description	Any Monash Staff	Faculty ADE	Faculty General Manager	Leadership nominee	Unit nominee (following confirmation)	Individual teacher selected for evaluation	DVC-E
Blue report : quantitative unit offering level report	Quantitative unit offering report	X						
Blue report : qualitative unit offering level report	Qualitative unit offering report		X	X	X	X		X
UPS Website Report: Teaching evaluation summary report	Results for teaching evaluation responses - aggregated to faculty or campus level.	X						

Reporting summary and audience

<i>Staff name</i>	<i>Position title</i>	<i>Level of access</i>	<i>School / Department / Location</i>	<i>Faculty</i>	<i>Blue report : quantitative teaching evaluation report</i>	<i>Blue report : qualitative unit offering level report</i>
Peter Smith	DVE	University		DVE	Y	Y
Daniel Brown	ADE	Faculty		Art, Design and Architecture	Y	Y
Trish Watson	FGM	Faculty		Art, Design and Architecture	Y	Y
Kate Black	HOS/HOD	School/Department	Design	Art, Design and Architecture		Y
Bad Pitt	HOS/HOD	School/Department	Architecture	Art, Design and Architecture		Y
Sam Gordon	HOS/HOD	School/Department	Fine Arts	Art, Design and Architecture		Y
Monica Green	ADE	Faculty		Arts	Y	Y
Rose Garden	FGM	Faculty		Arts	Y	Y
David Lee	SETU representative	Faculty		Arts		Y
Anna Grimm	HOS/HOD	Location	Malaysia		Y	Y

How to Set Up Dynamic Report Access

explorance Help Centre

- How to Set Up Dynamic Report Access - <https://support.explorance.com/hc/en-us/articles/360037074752-How-to-Set-Up-Dynamic-Report-Access>
 - DRA Power Guide - <https://support.explorance.com/hc/en-us/articles/360037074772-What-is-Dynamic-Report-Access-DRA-and-Do-I-need-It>
1. Set Up Organizational Roles for DRA
 2. Create the organizational hierarchy for projects
 3. Setup the relationships between people and the organizational units
 4. Assign reports to the organizational groups

How to Set Up Dynamic Report Access

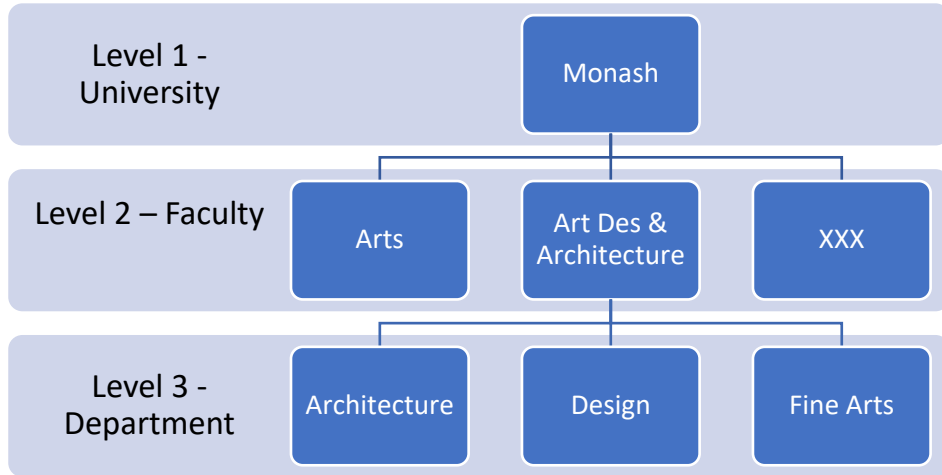
1. Set Up Organizational Roles for DRA

The screenshot shows the 'Organization' admin interface. The left sidebar contains navigation options: BLUE, ADMIN, Connection, SSO Profiles, Organization (selected), Datasources, Definitions, Configuration, Activity Logs, Record Mgmt, Dictionary Mgmt, Backup, and Help. The main content area is titled 'Organization' and has two tabs: 'Roles' (selected) and 'Hierarchy Templates'. Below the tabs is the 'Organizational Roles' section, which includes a description: 'Define roles within the organization that may participate in the feedback process (tutor, teacher assistant, instructor, etc.) or that will have access to reports (dean, provost, department chair, etc.).' A table displays 12 results, showing columns for 'Organizational Role ID', 'Organizational User Role', and 'Edit'. The table lists roles such as Associate Dean, Associate Provost, Campus Director, Campus Executive Director, Campus Manager, Campus Site Manager, Dean, Department Chair, Instructor, and Program Director. At the bottom of the table are 'Add' and 'Delete' buttons.

Organizational Role ID	Organizational User Role	Edit
Associate Dean	Associate Dean	Edit
Associate Provost	Associate Provost	Edit
Campus Director	Campus Director	Edit
Campus Executive Director	Campus Executive Director	Edit
Campus Manager	Campus Manager	Edit
Campus Site Manager	Campus Site Manager	Edit
Dean	Dean	Edit
Department Chair	Department Chair	Edit
Instructor	x Instructor	Edit
Program Director	Program Director	Edit

How to Set Up Dynamic Report Access

2. Create the organizational hierarchy for projects



	A	B	C
1	Org_id	Org_Unit	Parent_ID
2	Monash	University	
3	1	Arts	Monash
4	2	Art Des & Architecture	Monash
5	3	Business & Economics	Monash
6	4	Education	Monash
7	5	Engineering	Monash
8	6	Information Technology	Monash
9	7	Law	Monash
10	8	Med Nursing & Health Sci	Monash
11	9	Pharmacy & Pharm Science	Monash
12	10	Science	Monash
13	201	Architecture	2
14	202	Design	2
15	203	Fine Arts	2

The screenshot shows the 'Hierarchy Editor' interface. On the left, there are three checkboxes for 'Level 1', 'Level 2', and 'Level 3', all of which are currently unchecked. On the right, there are three input fields for defining the hierarchy levels, each with an 'en' button to its right. The first field is labeled 'Hierarchy 1' and contains the text 'Hierarchy 1'. The second field contains 'University'. The third field contains 'School/Departments'.

How to Set Up Dynamic Report Access

3. Setup the relationships between people and the organizational units
4. Assign reports to the organizational groups

My Reports

🟢 Editing: SETU Semester 2, 2019 : Unit offering qualitative report (University and Faculty comments)



Static Viewers Dynamic Viewers Static Viewers Export / Import

Dynamic Group Connections

fo1-Uni	<input checked="" type="checkbox"/>	Connected
fo2-Fac-all	<input checked="" type="checkbox"/>	Connected
fo3-Fac-qual	<input checked="" type="checkbox"/>	Connected
fo4-Fac-teach	<input type="checkbox"/>	Disconnected
fo5-Dept-qual	<input checked="" type="checkbox"/>	Connected

Thank you... Questions...

