

A DEEPER SHADE OF BLUE

Improving the Reporting of Evaluations Data



THE UNIVERSITY OF
WAIKATO
Te Whare Wānanga o Waikato

PRACTICAL CONSIDERATIONS

- ❑ Several “levels” of reporting required
- ❑ Limited time for manual data manipulation & analysis
- ❑ Use of CSV files straight from BLUE

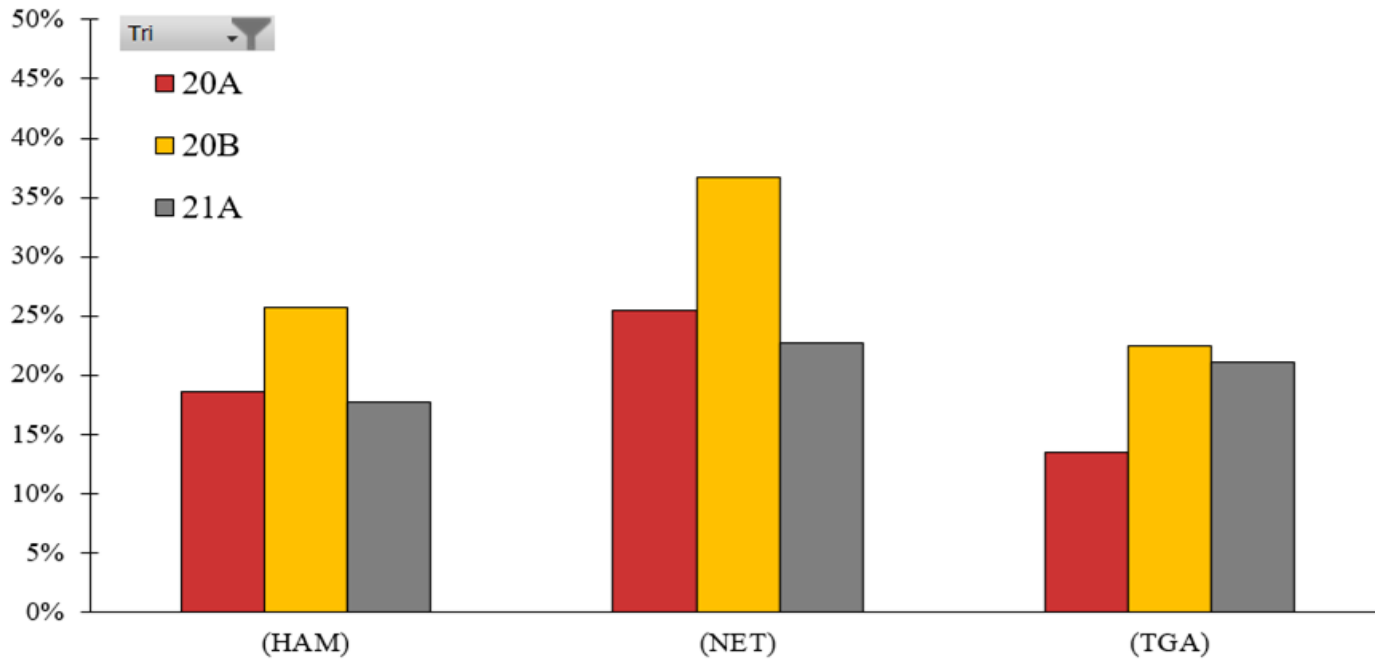


ANALYTIC CONSIDERATIONS

- ❑ **Wide range of sample sizes**
- ❑ **Validity of the data**
- ❑ **Limitation of the data**
- ❑ **Accurate + clear portrayal to support data utilisation**



Average of RR%



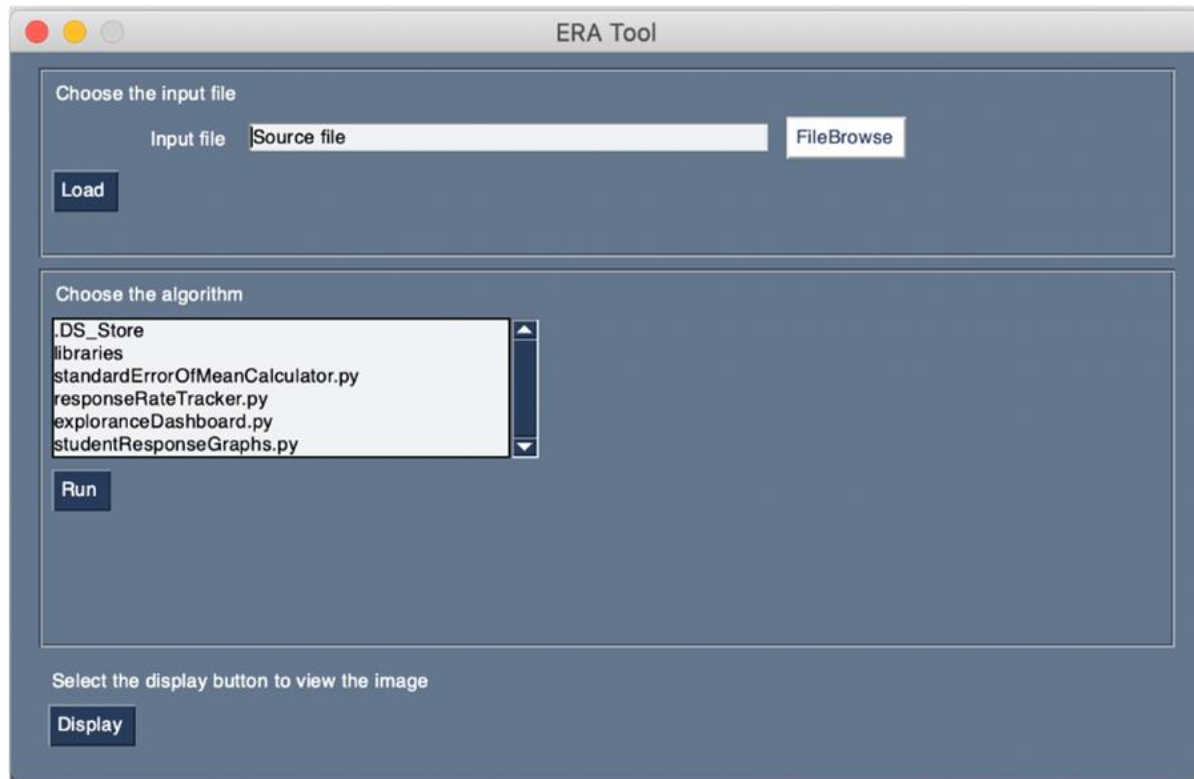


ERA

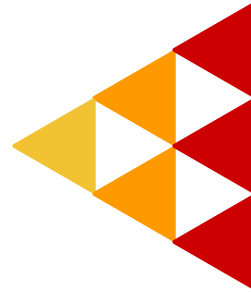
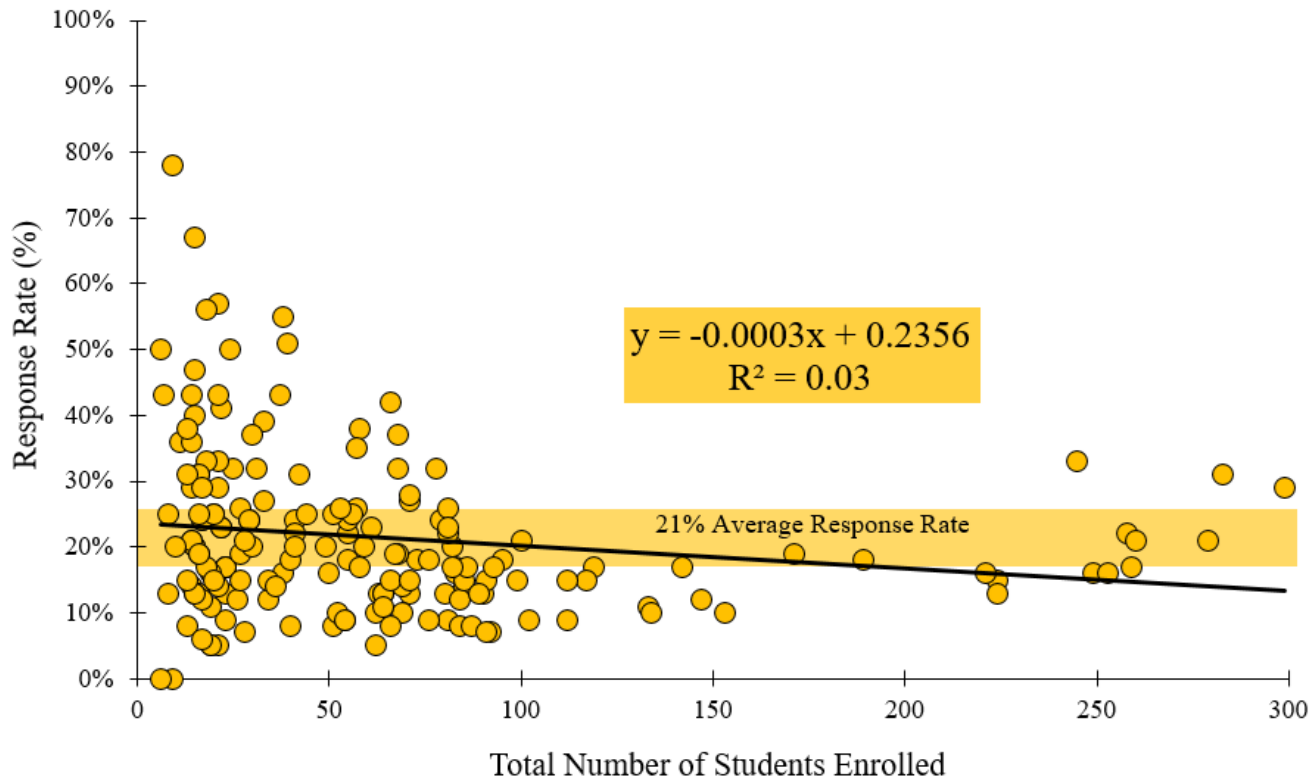
Evaluations . Research . Analysis .



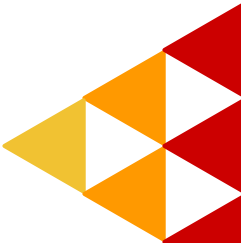
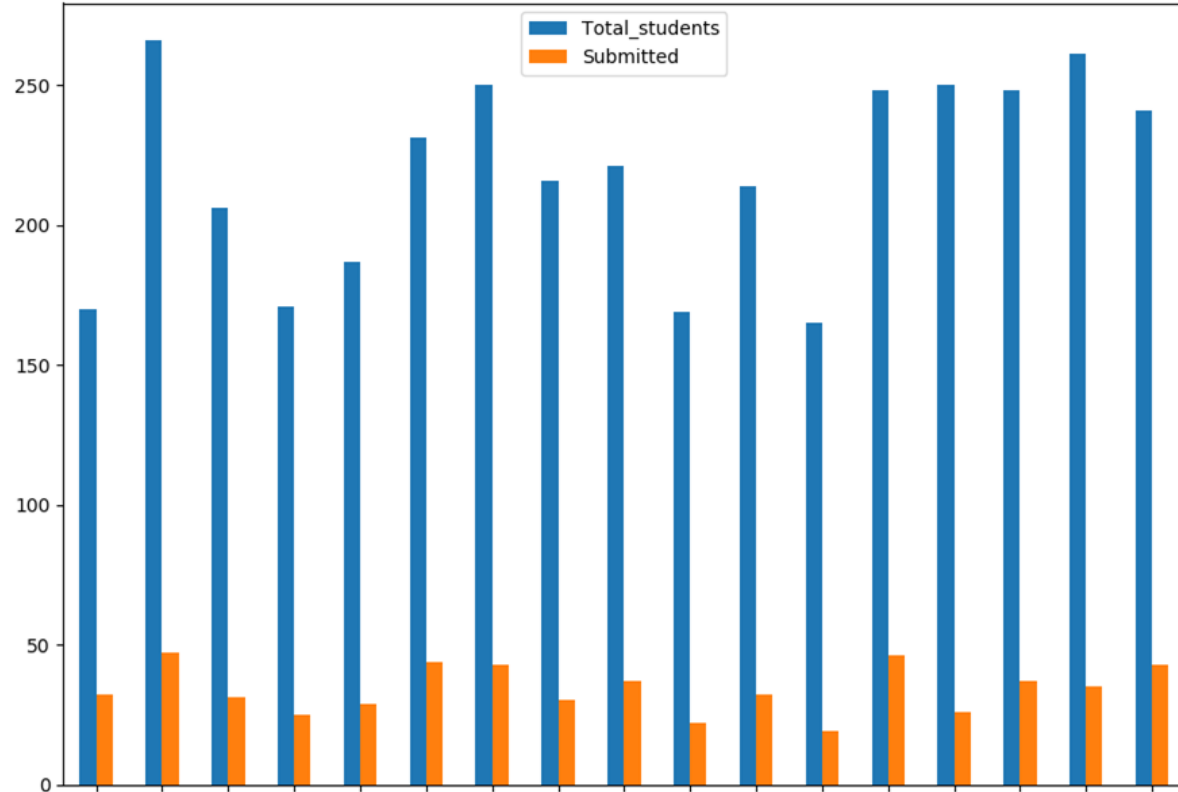
INTERFACE



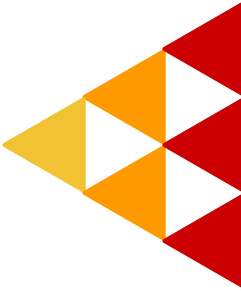
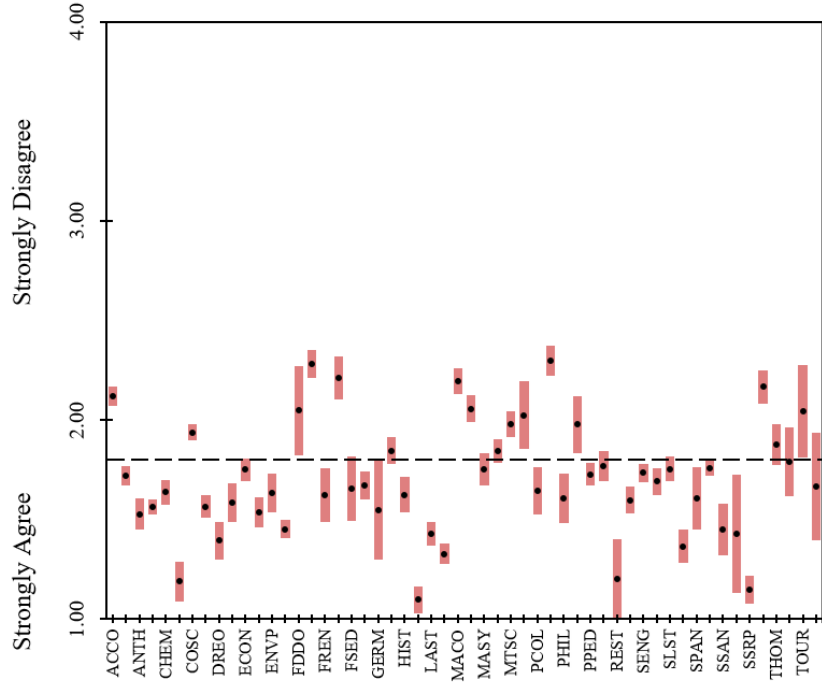
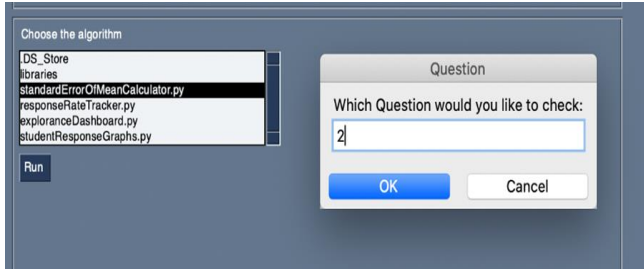
RESPONSE RATE / PAPER SIZE



RESPONSE RATE + TARGETING



REPORTING DATA VARIABILITY



OUTCOMES

- ❑ Better reporting of student's experience to staff
- ❑ Incl. metrics that acknowledge what we *do not* know
- ❑ Ability to strategically target our resources to increase
what we *do* know
- ❑ Less team-time on Business As Usual tasks



DATA ANALYTICS & EVALUATIONS

University of Waikato (evaluations@waikato.ac.nz)

- **Rahat Hasan (Team Lead)**
- **Emma-Leigh Hodge (me! ehodge@waikato.ac.nz)**
- **Eden Poihipi (Programming Support)**

