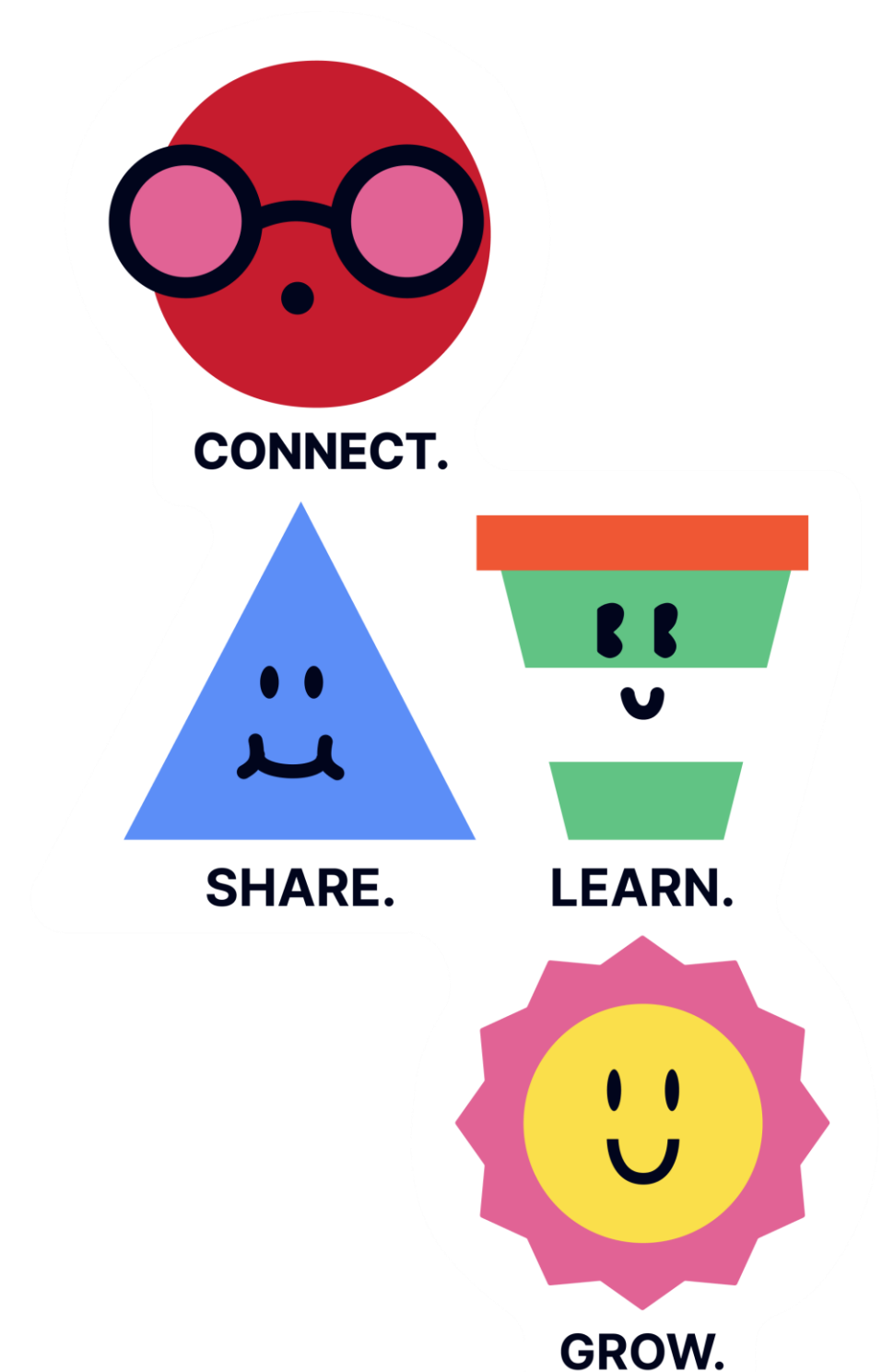


# Empower Faculty and Academic Admin Leaders with Blue Dashboard


Chris Slack, Alexandra Rascanu



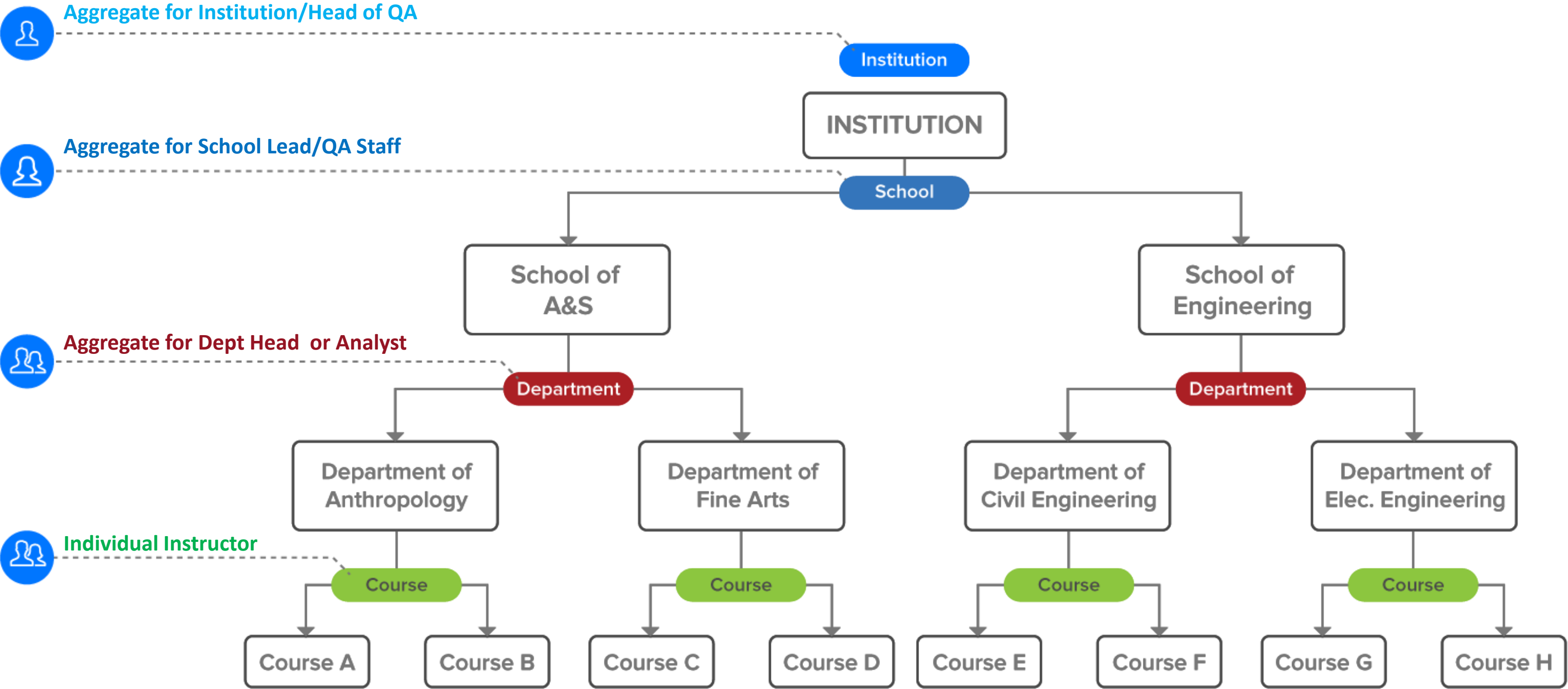


# WHAT IS THE BLUE DASHBOARD?

Blue Dashboard is an **add-on** analytics module within Blue platform that is providing

- Visual **self service** analytics on all data
  - Historical data trend analysis
  - Share data at scale and with trust
    - Share data to **stakeholders at every level** of an institution.
    - Flexible data management capabilities to distribute the **right content for the right audience**
- 

# DASHBOARD AND INSTITUTIONAL HIERARCHY



# DASHBOARD DATA AND QUESTION MAPPING



On

A1 Course Evaluation – I

25 dashboard questions n

Off

Module Evaluation - Ser

Course Evaluations 2020

0 dashboard questions m

On

A1 Course Evaluation – !

25 dashboard questions n

Off

Course Evaluation (with

0 dashboard questions m

Off

Module Evaluation

0 dashboard questions m

On

A1 Course Evaluation – !

25 dashboard questions n

Dashboard question

Dashboard questions are v

made of one Blue question

Search...

27 items

Hard work is required to

CQ1

13 mapped questions

How many hours a week

CATS7

13 mapped questions

I attended most class sess

CQ3

13 mapped questions

Prepare

Preview

Publish

Summary

Data for analysis

Questions

Question groups

Demographics

Organiza

Question groups

Question groups provide a summarized trend analysis of similar questions

Search...

1. Instructor questions

Add Dashboard Questions

14 mapped dashboard questions

2. Course questions

Add Dashboard Questions

6 mapped dashboard questions

3. Overall questions

Add Dashboard Questions

2 mapped dashboard questions

4. How many hours a week outside of class did you spend doing work for t

Add Dashboard Questions

1 mapped dashboard questions

5. To my knowledge there was no cheating in this class.

Add Dashboard Questions

1 mapped dashboard questions

Course sections demographics

Drag and drop a datasource field onto a Course sections demographic or create a new Course sections demographic by dropping the datasource field onto the creation drop zone.

Search...

COLL\_CODE

13 mapped projects

string

1

College

13 mapped projects

string

2

DEPT\_CODE

13 mapped projects

string

3

Department

13 mapped projects

string

4

Enrollment

13 mapped projects

integer

7

LEVEL\_CODE

13 mapped projects

string

5

MAX Enrollment

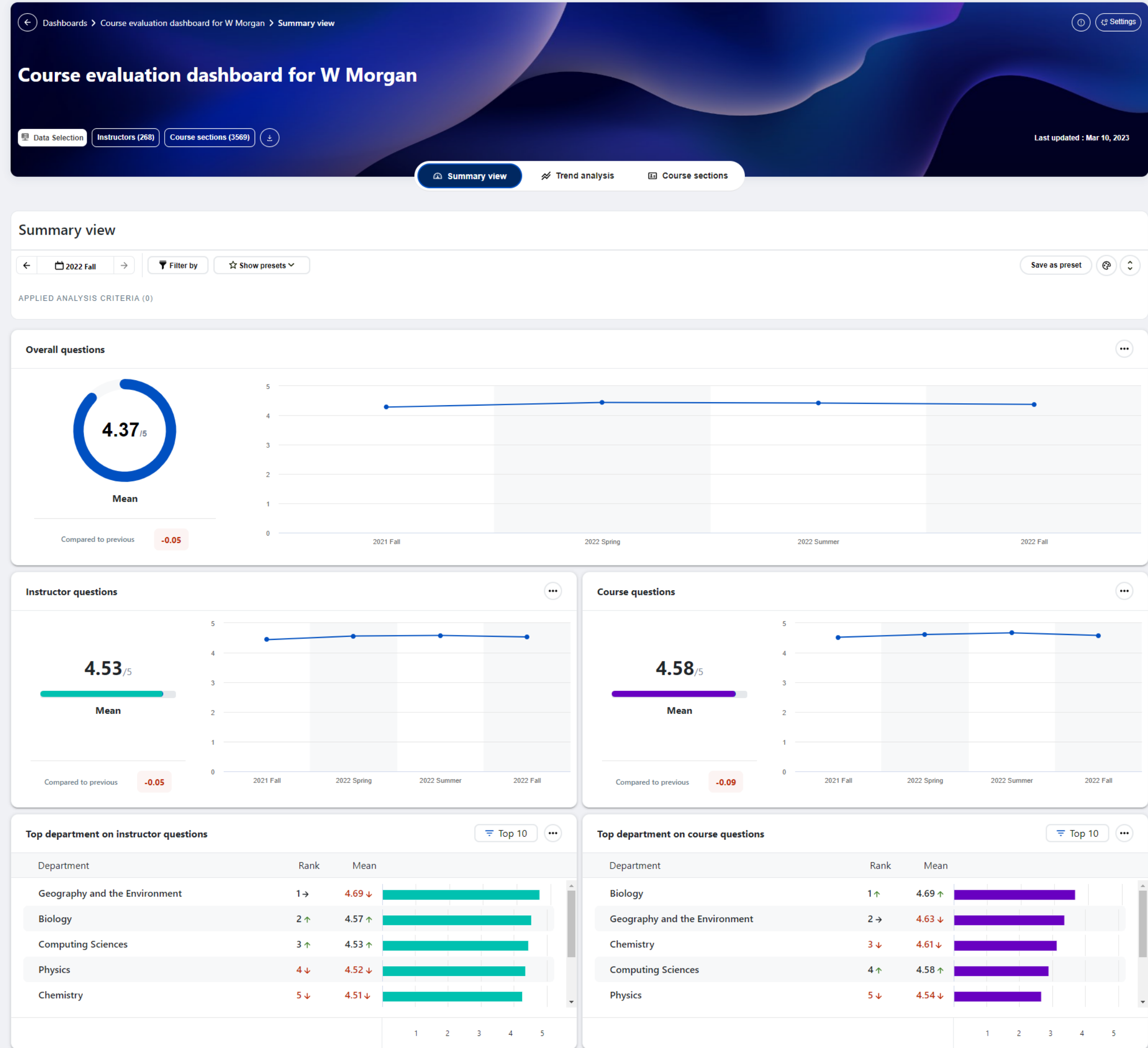
13 mapped projects

integer

8

# DASHBOARD

## 4.0



# DASHBOARD 4.0

## Hierarchy based grouping

The dashboard will group items according to the selected user group and the organizational hierarchy. You can then drill down further into an organizational level.

Hierarchy based grouping ☒ On

Group

Dean

Dean

Department head

### Items (8)

#### Astrophysics and Planetary Sci

213 people responded

#### Biology

1249 people responded

#### Chemistry

1787 people responded

#### Computing Sciences

713 people responded

#### Geography and the Environment

419 people responded

#### Mathematics and Statistics

2040 people responded

#### Physics

557 people responded

#### SCI

10 people responded

Items (8)

Mean

Astrophysics and Planetary Sci

Biology

Chemistry

Computing Sciences

Geography and the Environment

Mathematics and Statistics

Physics

SCI

0 0.2 0.4

4.53 / 5

4.58 / 5

4.37 / 5

2.32 / 5

4.64 / 5

1. Instructor questions

2. Course questions

3. Overall questions

4. How many hours a week outside of class did you spend doing work for this course?

5. To my knowledge there was no cheating in this class.

Mean

Mean

Mean

Mean

Mean

4.58

4.78

4.85

3.5

4.7

4.39

4.59

3.75

3.55

4.41

4.62

4.61

4.64

2.82

4.67

4.63

4.55

4.39

2.18

4.63

4.24

4.41

3.88

2.79

4.5

3.93

4.34

3.61

2.17

4.11

4.4

4.52

4.11

2.43

4.5

4.84

4.62

4.8

2.62

4.74

4.76

4.62

4.5

2.35

4.57

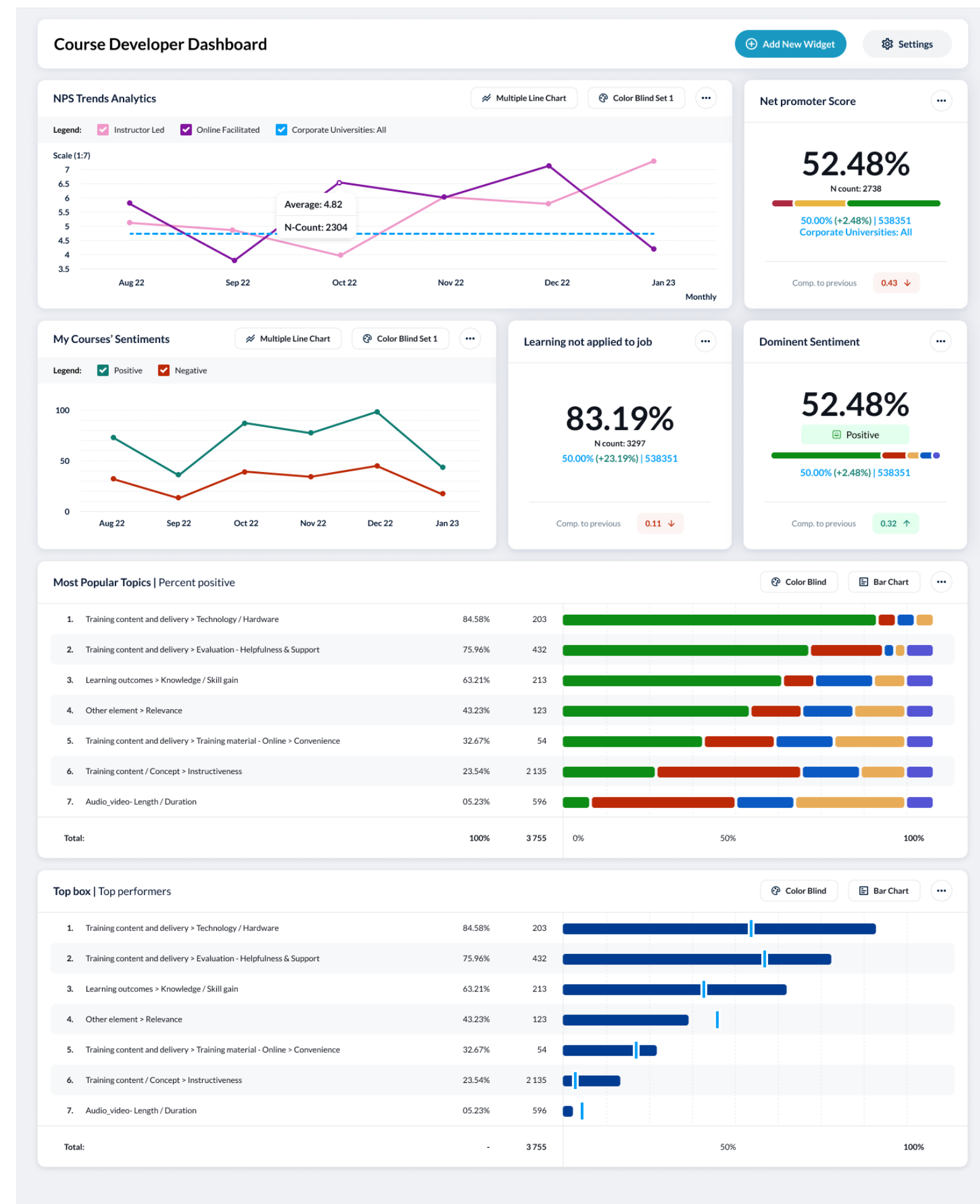
DEMO





# COMING NEXT: DASHBOARD AND ML

- Mixed method analytics, link qualitative feedback to quantitative metrics
- Monitor dominant sentiment for key programs
- Identify most popular topics from across all comments
- Track how sentiment has changed over time for key programs or topics
- Easily understand what learners are recommending (Start, Stop, Do more, etc.)





# QUESTIONS

