



More about Upcoming Blue 9

Alexandra Rascanu - Blue Product Manager



“Transformation isn’t sweet and bright.
It’s a dark and murky. (...) A complete
uprooting, before becoming.”
Victoria Erickson



Explorance Blue 9 Key Highlights

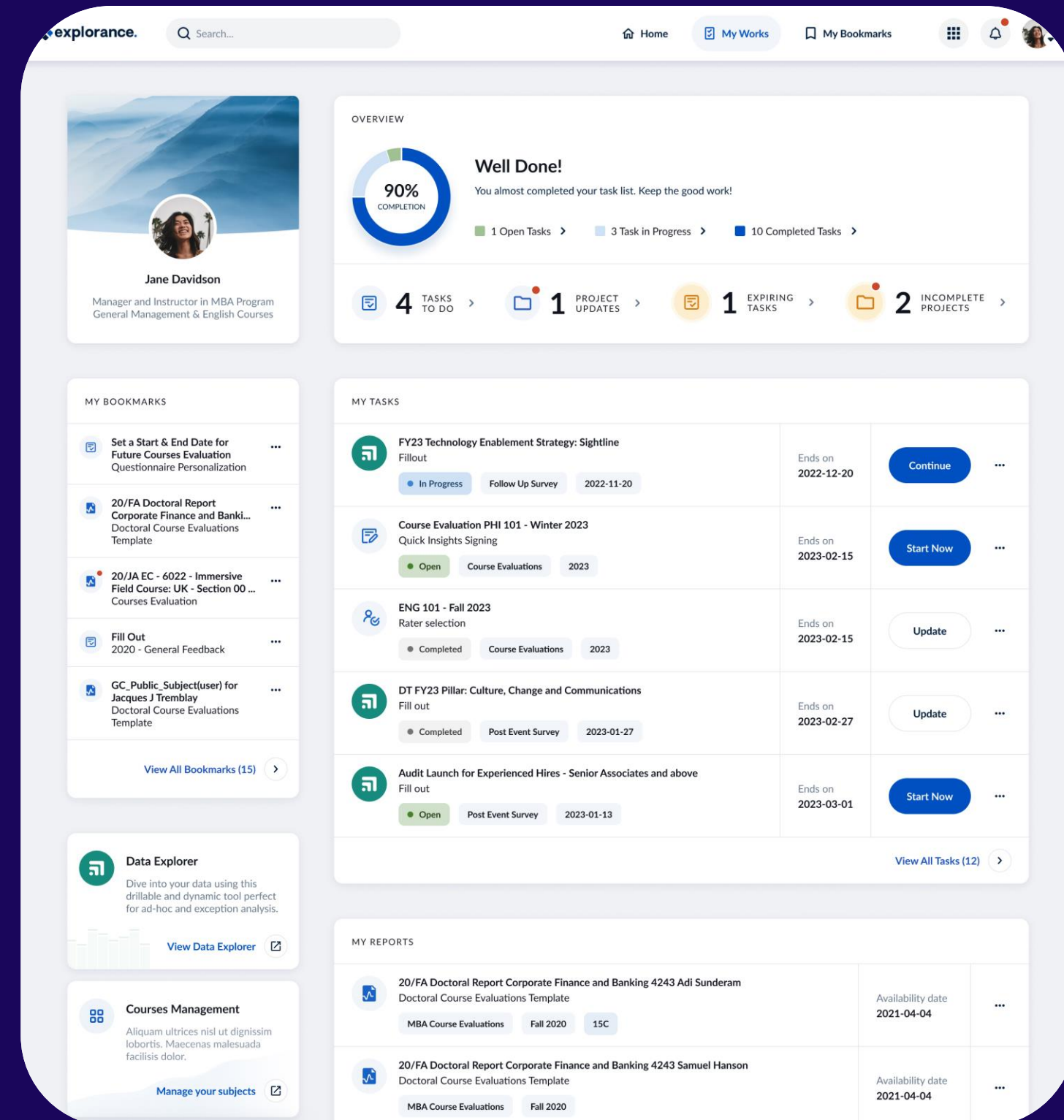
01

Blue 9.0

Centralized Home

Key Highlights:

- A central space for Tasks and Reports, focused on feedback and improvement
- Customizable Home experience
 - Tags
 - User defined filters
 - Bookmarks
- Expanded SSO support



Blue Authentication

Oauth 2.0/Federated (Cross domain SSO)

- Expanded SSO support
- Delegated configuration

2 Factor Authentication

Password

- Duration
- History
- Prohibited words
- Account lockout



Blue 9.1 updates

**Blue Home
Expansion**

**Tasks and Reports
RESTful APIs**

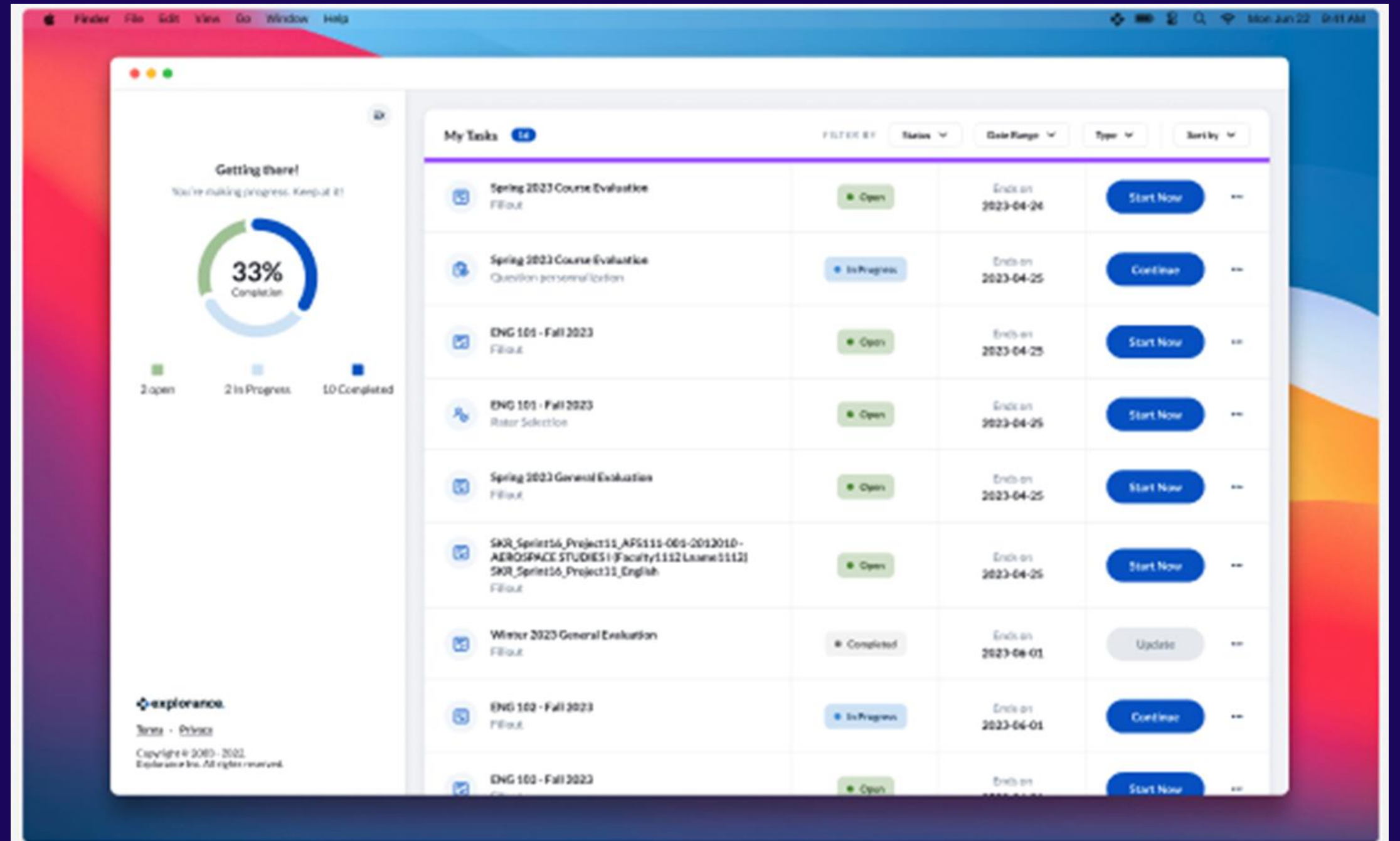
Blue Desktop App

DIG

Blue Desktop App

Key Highlights:

- New Task distribution method
- Available Directly in a computer system tray
- Desktop app notifications
- A centralized place to view Tasks / Reports



DIG Updates

Key Highlights:

- Refined User Interface
 - In-line editing
 - New split / merge views
 - New add / assign views
 - Customizable sticky columns
 - Color coded status column
- Modify after publish
- Improved performance

Actions	Alerts	Status	Given name	Family Name	Professorship	Hire_Date
<input type="checkbox"/>	⋮	Original	Adriana	CARVER	Lecturer	2008-Nov-01
<input type="checkbox"/>	⋮	Modified	Adam	CHAVES	Associate Professor	2008-Oct-01
	⋮	1	Adam	CHAVES	Associate Professor	2008-Oct-01
	⋮	2	Adam	CHAVES	Associate Professor	2008-Oct-01
<input type="checkbox"/>	⋮	Original	Annette	FONG	Associate Professor	2008-Jul-01
<input type="checkbox"/>	⋮	Original	Annik	MOLLIK	Lecturer	2008-Nov-01
<input type="checkbox"/>	⋮	Original	Alan	RITTER	Assistant Professor	2008-Oct-01
<input type="checkbox"/>	⋮	Original	Bernard	BAKER	Distinguished	2008-Aug-01
<input type="checkbox"/>	⋮	Original	Boris	BELINI	Adjunct	2009-Jan-01

Blue 9.2 updates

**Instructor
pre-selection**

**ML in Blue
reports**

**Report block
enhancements**

BI Restful APIs

Blue 9.x updates

**Scheduling
expansion**

**Central Subject
space in the home
experience**

**In the Moment
Feedback**

And more!

Explorance Blue 9 Demo

02

Online Help update

03

Online Help update

The screenshot displays the Explorance Blue Help Center interface. At the top left is the Explorance logo with 'HELP CENTER' below it. To the right is a 'Submit a request' button and navigation links for 'News', 'Training', and 'Community'. A 'blue' logo is in the top right corner. The main banner features the 'blue' logo and the tagline 'The people insights platform.' Below the banner is a search bar for 'Search user guides'. The content is organized into three columns: 'User guides', 'Community', and 'News and updates'. The 'User guides' column includes sections for 'I'm new to Blue' (with sub-links for Intro to Blue, Release notes, Training, Patches) and 'I want to explore the guides' (with sub-links for System settings, Data, Project, Reports, Participants guides, DIG, Blue Dashboard, Blue Connector, BTA). The 'Community' column features 'Forums and community' (with sub-links for Blue community forums, Community resources) and a 'TOPICS' section listing items like 'Name of PDF reports - random characters', 'Place "Resend" Button in SM Tasks Under Institution Control', and 'BNG 2023 Session'. The 'News and updates' column includes 'New and updated articles' (listing Blue Dashboard 4.0 release notes, Troubleshooting - Blue Connector, DIG, LMS, and SSO, and Default piping/field mapping symbols) and 'Product news' (highlighting 'Coming soon - Blue 8.1.1 - adds Brightspace connection and more' and 'OUT NOW - BlueML models - more, better, deeper insights').

Overview

04

Overview

Around the corner *(1-4 months)*

- **Blue 9.0**
 - New Blue Home
 - Customizable experience
 - Expanded SSO
 - Enhanced built-in auth.
 - Advanced Filtering

Fast approaching *(4-8 months)*

- **Blue 9.1**
 - Blue Home expansion
 - New task & reports RESTful APIs
 - DIG UX update

On the horizon *(8 months+)*

- **Blue 9.2**
 - BlueML in reports
 - Instructor pre-selection
 - Report block enhancements
 - BI RESTful APIs
- **Blue 9.x**
 - BlueML in dashboards
 - In-the-moment feedback
 - Central subject space
 - Scheduling expansion
 - Mobile app

*Please be advised that roadmaps and timelines are subject to change to ensure the best possible outcome for our customers.



REFLECT AND REIMAGINE:

10 Years of Shaping Higher Education